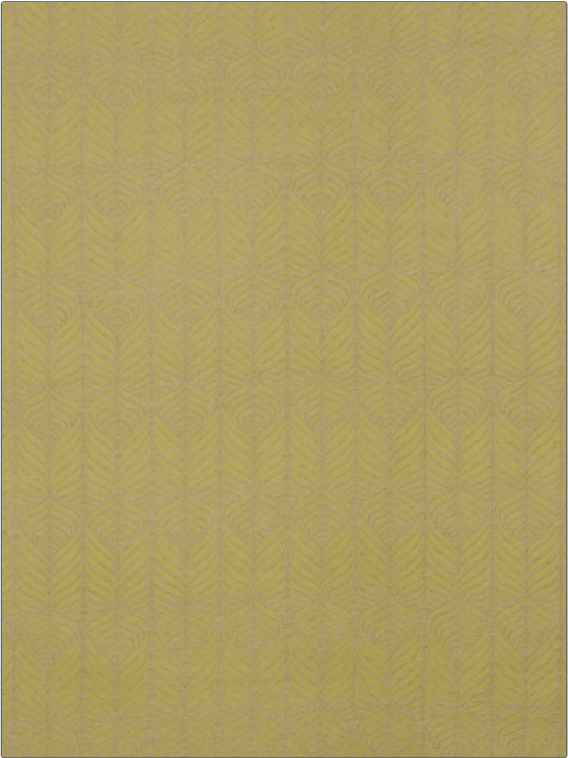


PATTERN	Quill Weave
COLOR	03

BRAND	APPLICATION
Liberty of London	Fabric
USES	CATEGORIES
Bedding, Drapery, Multipurpose, Upholstery	Wovens
COLORS	DESIGN TYPES
Green	Leaves, Ogee
SCALE	RAILROADED
Medium	Not Railroaded



WIDTH	VERTICAL REPEAT	HORIZONTAL REPEAT	CONTENT
57.00 in (144.78 cm)	5.60 in (14.22 cm)	3.50 in (8.89 cm)	46% Linen, 35% Polyester, 19% Cotton
BACKING	FIRE CODES	DOUBLE RUBS	PRODUCT NUMBER
	UFAC Class I / NFPA 260	Exceeds 30,000 Double Rubs (Wyzenbeek Method)	5976603
COUNTRY	CLEANING CODES		
Italy	S		

ADDITIONAL PRODUCT NOTES
Passes 20,000 Martindale Tst, Ca Tb 117-2013, Exclusive Pattern