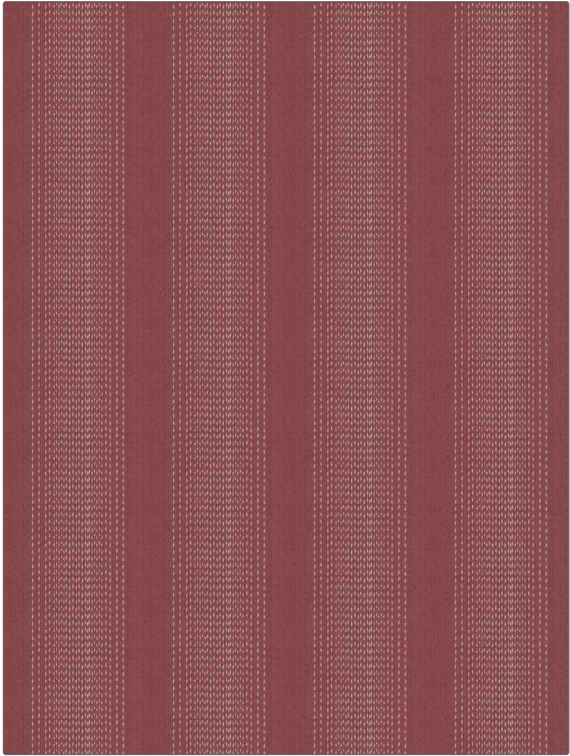


PATTERN Maribel Stripe
COLOR 02

BRAND	APPLICATION
Fabricut	Fabric
USES	CATEGORIES
Bedding, Drapery, Multipurpose, Upholstery	Wovens
COLORS	DESIGN TYPES
Red	Stripes
SCALE	RAILROADED
Medium	Not Railroaded



WIDTH	VERTICAL REPEAT	HORIZONTAL REPEAT	CONTENT
54.00 in (137.16 cm)	0.00 in (0.00 cm)	6.75 in (17.14 cm)	100% Cotton
BACKING	FIRE CODES	DOUBLE RUBS	PRODUCT NUMBER
	UFAC Class I / NFPA 260	Exceeds 36,000 Double Rubs (Wyzenbeek Method)	6065502
COUNTRY	CLEANING CODES		
China	S		

ADDITIONAL PRODUCT NOTES

Ca Tb 117-2013, Exclusive Pattern