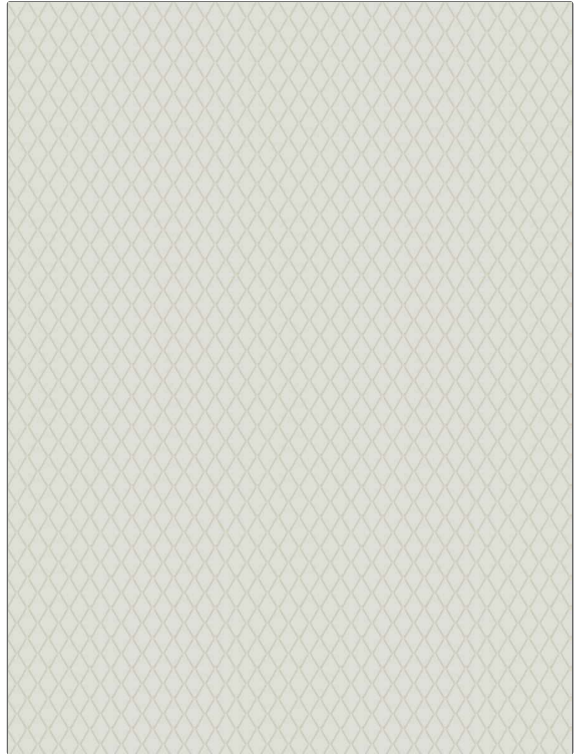


**PATTERN** Margo  
**COLOR** Muslin

<b>BRAND</b>	<b>APPLICATION</b>
Fabricut	Fabric
<b>USES</b>	<b>CATEGORIES</b>
Drapery, Multipurpose, Upholstery	Wovens, Solids / Small Scale Patterns
<b>BOOK</b>	<b>COLORS</b>
French General Linen	Beige, Off White / Ivory
<b>DESIGN TYPES</b>	<b>SCALE</b>
Diamond	Small
<b>RAILROADED</b>	
Not Railroaded	



<b>WIDTH</b>	<b>VERTICAL REPEAT</b>	<b>HORIZONTAL REPEAT</b>	<b>CONTENT</b>
54.00 in (137.16 cm)	1.00 in (2.54 cm)	0.75 in (1.90 cm)	93% Cotton, 7% Rayon
<b>BACKING</b>	<b>FIRE CODES</b>	<b>DOUBLE RUBS</b>	<b>PRODUCT NUMBER</b>
Light Acrylic Backing	UFAC Class I / NFPA 260	Exceeds 36,000 Double Rubs (Wyzenbeek Method)	6066307
<b>DATE BOOKED</b>	<b>COUNTRY</b>	<b>CLEANING CODES</b>	
07/2022	China	S	

**ADDITIONAL PRODUCT NOTES**

Ca Tb 117-2013, Light Acrylic Backing, Exclusive Pattern