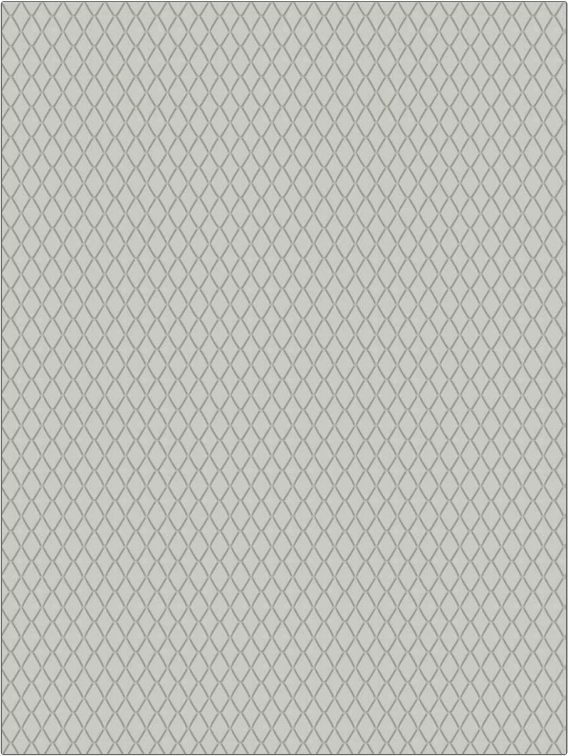


| | |
|---------|--------------|
| PATTERN | Margo |
| COLOR | 05 |

| | |
|--|--|
| BRAND | APPLICATION |
| Fabricut | Fabric |
| USES | CATEGORIES |
| Drapery, Multipurpose, Upholstery | Wovens, Solids / Small Scale Patterns |
| COLORS | DESIGN TYPES |
| Grey, Off White / Ivory | Diamond |
| SCALE | RAILROADED |
| Small | Not Railroaded |



| | | | |
|------------------------------|--------------------------------|--|-----------------------------|
| WIDTH | VERTICAL REPEAT | HORIZONTAL REPEAT | CONTENT |
| 54.00 in (137.16 cm) | 1.00 in (2.54 cm) | 0.75 in (1.90 cm) | 93% Cotton, 7% Rayon |
| BACKING | FIRE CODES | DOUBLE RUBS | PRODUCT NUMBER |
| Light Acrylic Backing | UFAC Class I / NFPA 260 | Exceeds 36,000 Double Rubs (Wyzenbeek Method) | 6066405 |
| COUNTRY | CLEANING CODES | | |
| China | S | | |

| |
|---|
| ADDITIONAL PRODUCT NOTES |
| Ca Tb 117-2013, Light Acrylic Backing, Exclusive Pattern |