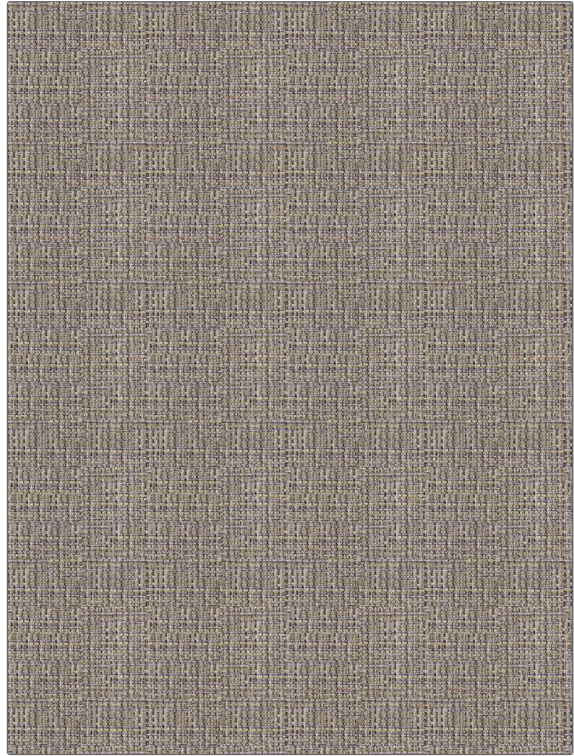


| | |
|----------------|-----------------|
| PATTERN | Rockland |
| COLOR | 30 |

| | |
|---------------------------------------|---|
| BRAND | APPLICATION |
| Fabricut | Fabric |
| USES | CATEGORIES |
| Upholstery | Easy To Clean, Fibreguard, Wovens, Solids / Small Scale Patterns |
| COLORS | DESIGN TYPES |
| Lavender / Purple, Taupe / Tan | Small Scale Woven, Texture Plain |
| SCALE | RAILROADED |
| Small | Not Railroaded |



| | | | |
|-----------------------------------|-----------------------------|--|--|
| WIDTH | FINISH | VERTICAL REPEAT | HORIZONTAL REPEAT |
| 55.00 in (139.70 cm) | Fibreguard | 0.00 in (0.00 cm) | 0.00 in (0.00 cm) |
| CONTENT | BACKING | FIRE CODES | DOUBLE RUBS |
| 51% Polyester, 49% Acrylic | 100% Acrylic Backing | UFAC Class I / NFPA 260, Passes MVS 302 | Exceeds 40,000 Double Rubs (Wyzenbeek Method) |
| PRODUCT NUMBER | COUNTRY | CLEANING CODES | |
| 6114230 | Turkey | WW | |

| |
|---|
| ADDITIONAL PRODUCT NOTES |
| Fibreguard, Pfas-Free, Passes 80,000 Martindale Tst, Oeko Tex Standard 100, Iso 14001, Ca Tb 117-2013, 100% Acrylic Backing, Exclusive Pattern, Eco / Environment Plus |