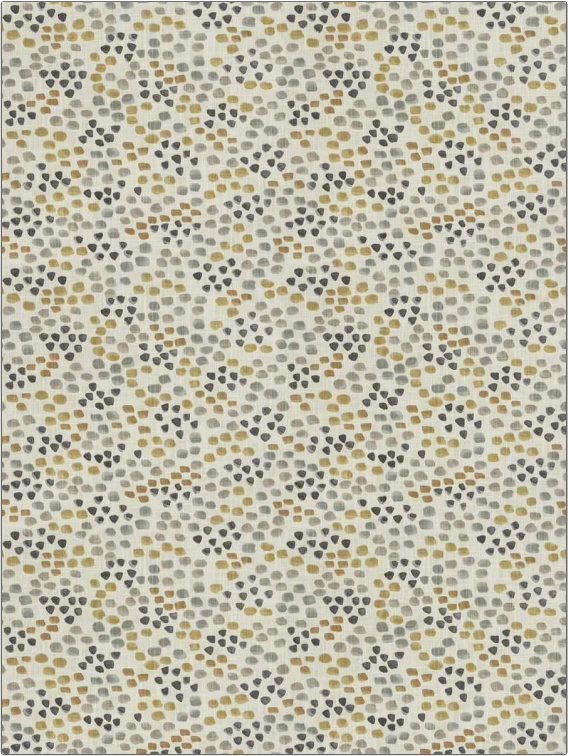


|         |         |
|---------|---------|
| PATTERN | Normids |
| COLOR   | 03      |

|   |   |
|---|---|
| BRAND   | APPLICATION   |
| Fabricut                                      | Fabric  |
| USES  | CATEGORIES  |
| Bedding, Drapery,<br>Multipurpose, Upholstery | Prints  |
| COLORS  | DESIGN TYPES  |
| Grey, Taupe / Tan, Linen                      | Geometric, Print Pattern,<br>Contemporary / Modern,<br>Dots / Circles |
| SCALE   | RAILOADED   |
| Large   | Not Railroaded  |



|                      |                               |                     |  |
|----------------------|-------------------------------|---------------------|--|
| WIDTH                | FINISH                        | VERTICAL REPEAT     | HORIZONTAL REPEAT                                |
| 54.00 in (137.16 cm) | Soil & Stain Repellent Finish | 25.25 in (64.14 cm) | 27.00 in (68.58 cm)                              |
| CONTENT              | BACKING                       | FIRE CODES          | DOUBLE RUBS                                      |
| 100% Cotton          |                               | UFAC Class I        | Exceeds 12,000 Double<br>Rubs (Wyzenbeek Method) |
| PRODUCT NUMBER       | COUNTRY                       | CLEANING CODES      |  |
| 6123903              | Pakistan                      | S                   |  |

|  |
|--|
| ADDITIONAL PRODUCT NOTES                                 |
| Soil & Stain Repellent Finish, Pfas-Free, Ca Tb 117-2013 |