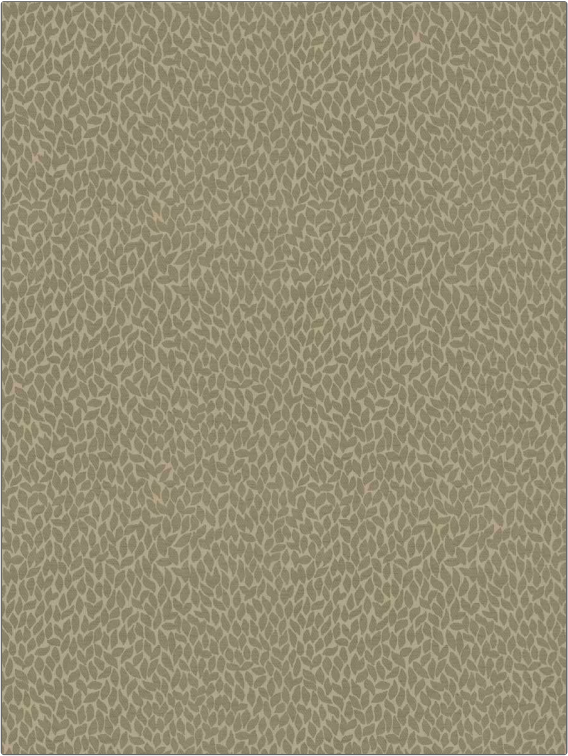


PATTERN	Watchful
COLOR	Papyrus

BRAND	APPLICATION
Fabricut	Fabric
USES	CATEGORIES
Upholstery	Wovens, Chenille
COLORS	DESIGN TYPES
Beige, Linen	Leaves, Small Scale Woven
SCALE	RAILROADED
Small	Not Railroaded



WIDTH	FINISH	VERTICAL REPEAT	HORIZONTAL REPEAT
54.50 in (138.43 cm)	Soil & Stain Repellent Finish	13.63 in (34.62 cm)	14.13 in (35.89 cm)
CONTENT	BACKING	FIRE CODES	DOUBLE RUBS
74% Polyester, 26% Recycled Polyester	100% Acrylic Backing	UFAC Class I / NFPA 260	Exceeds 50,000 Double Rubs (Wyzenbeek Method)
PRODUCT NUMBER	COUNTRY	CLEANING CODES	
6147401	USA	WS	

ADDITIONAL PRODUCT NOTES
Soil & Stain Repellent Finish, Ca Tb 117-2013, 100% Acrylic Backing, Exclusive Pattern