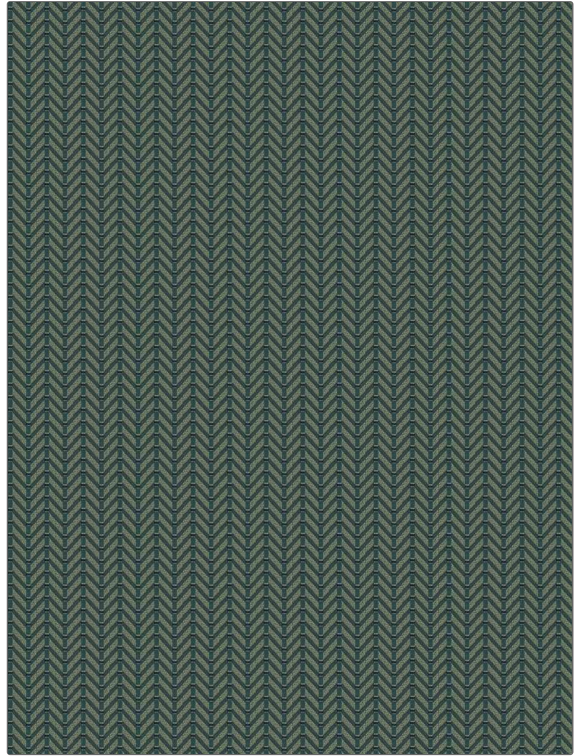


PATTERN	Dissimilar
COLOR	Water

BRAND	APPLICATION
Fabricut	Fabric
USES	CATEGORIES
Upholstery	Wovens, Solids / Small Scale Patterns
COLORS	DESIGN TYPES
Aqua / Teal	Geometric, Herringbone, Stripes, Contemporary / Modern
SCALE	RAILROADED
Small	Not Railroaded



WIDTH	FINISH	VERTICAL REPEAT	HORIZONTAL REPEAT
55.00 in (139.70 cm)	Soil & Stain Repellent Finish	0.60 in (1.52 cm)	1.75 in (4.44 cm)
CONTENT	BACKING	FIRE CODES	DOUBLE RUBS
59% Cotton, 32% Polyester, 9% Acrylic		UFAC Class I / NFPA 260	Exceeds 50,000 Double Rubs (Wyzenbeek Method)
PRODUCT NUMBER	COUNTRY	CLEANING CODES	
6148104	Italy	S	

ADDITIONAL PRODUCT NOTES
Soil & Stain Repellent Finish, Ca Tb 117-2013, Exclusive Pattern