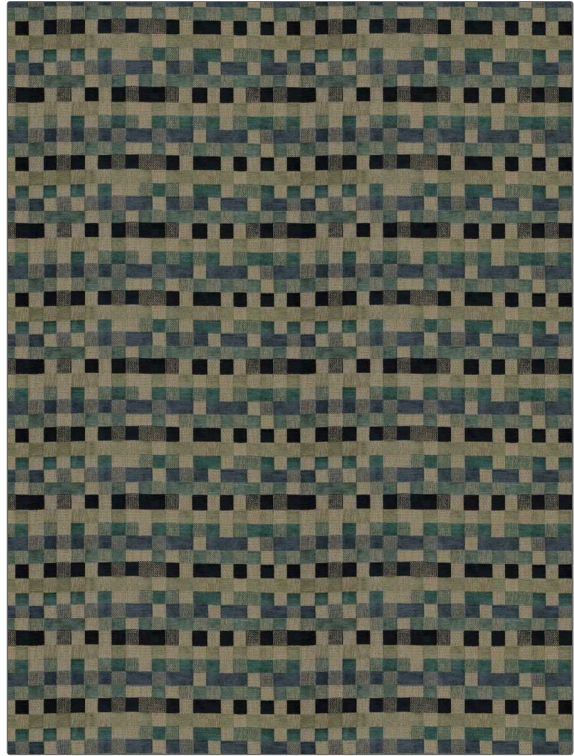


PATTERN Bourn
COLOR Water

| | |
|--------------------------------------|---|
| BRAND | APPLICATION |
| Fabricut | Fabric |
| USES | CATEGORIES |
| Upholstery | Wovens, Chenille |
| COLORS | DESIGN TYPES |
| Blue, Navy, Aqua / Teal, Light Green | Geometric, Check / Plaid, Contemporary / Modern |
| SCALE | RAILROADED |
| Medium | Not Railroaded |



| | | | |
|----------------------|------------------------|--------------------------|---|
| WIDTH | VERTICAL REPEAT | HORIZONTAL REPEAT | CONTENT |
| 54.00 in (137.16 cm) | 6.50 in (16.51 cm) | 13.00 in (33.02 cm) | 37% Polyester, 32% Viscose, 18% Cotton, 13% Acrylic |
| BACKING | PRODUCT NUMBER | COUNTRY | |
| | 6149203 | Turkey | |

ADDITIONAL PRODUCT NOTES

Pfas-Free