

**PATTERN** Retain  
**COLOR** Cabernet

**BRAND**

**Fabricut**

**APPLICATION**

**Fabric**

**USES**

**Upholstery**

**CATEGORIES**

**Wovens**

**COLORS**

**Red, Burgundy**

**DESIGN TYPES**

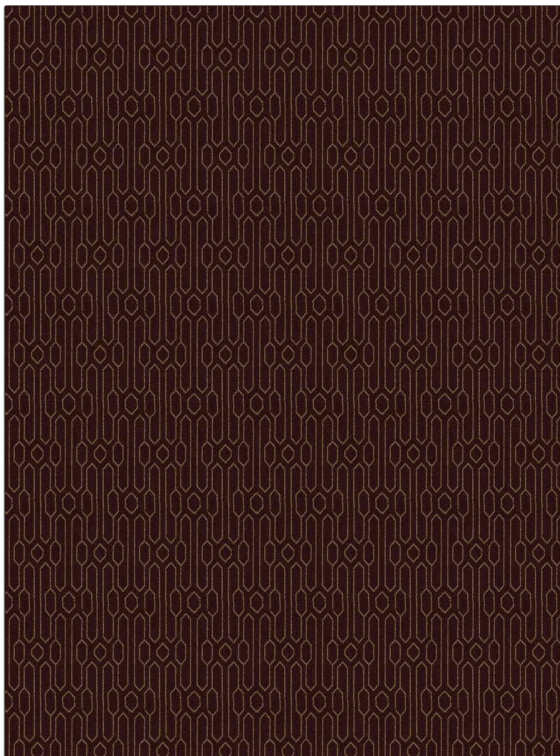
**Geometric, Lattice / Fretwork, Contemporary / Modern, Diamond**

**SCALE**

**Medium**

**RAILROADED**

**Railroaded**



**WIDTH**

**54.00 in (137.16 cm)**

**FINISH**

**Soil & Stain Repellent Finish**

**VERTICAL REPEAT**

**4.75 in (12.06 cm)**

**HORIZONTAL REPEAT**

**3.00 in (7.62 cm)**

**CONTENT**

**85% Polyester, 15% Cotton**

**BACKING**

**FIRE CODES**

**UFAC Class I / NFPA 260**

**DOUBLE RUBS**

**Exceeds 50,000 Double Rubs (Wyzenbeek Method)**

**PRODUCT NUMBER**

**6150801**

**COUNTRY**

**Italy**

**CLEANING CODES**

**S**

**ADDITIONAL PRODUCT NOTES**

**Soil & Stain Repellent Finish, Passes 40,000 Martindale Tst, Ca Tb 117-2013, Shown Railroaded, Exclusive Pattern**