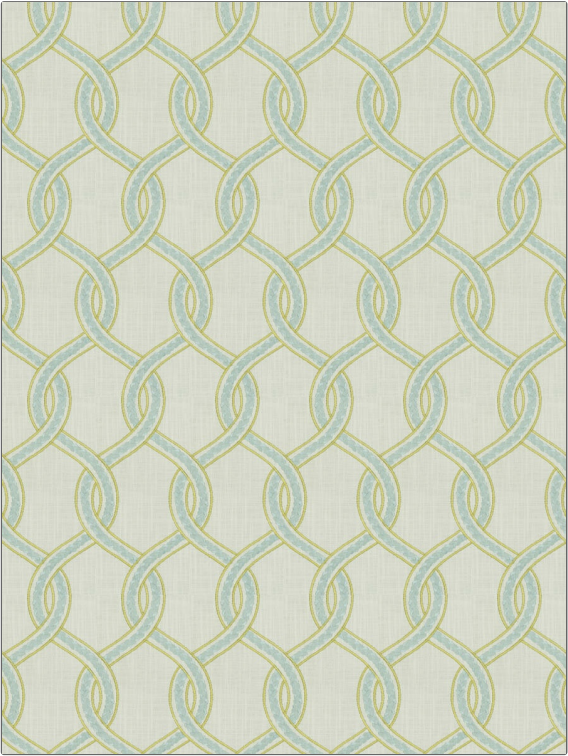


|         |              |
|---------|--------------|
| PATTERN | Mola Lattice |
| COLOR   | Caribe       |

|                          |                                |
|--------------------------|--------------------------------|
| BRAND                    | APPLICATION                    |
| Fabricut                 | Fabric                         |
| USES                     | CATEGORIES                     |
| Bedding, Drapery         | Crewels / Embroideries         |
| COLORS                   | DESIGN TYPES                   |
| Aqua / Teal, Light Green | Embroidery, Lattice / Fretwork |
| SCALE                    | RAILOADED                      |
| Medium                   | Not Railroaded                 |



|                      |                    |                    |  |
|----------------------|--------------------|--------------------|--|
| WIDTH                | VERTICAL REPEAT    | HORIZONTAL REPEAT  | CONTENT  |
| 54.00 in (137.16 cm) | 9.25 in (23.50 cm) | 4.50 in (11.43 cm) | Base: 73% Cotton, 27% Polyester, Embroidery 59% Rayon 41% Cotton |
| BACKING              | PRODUCT NUMBER     | COUNTRY            | CLEANING CODES   |
|                      | 6199801            | India              | S  |

|  |
|--|
| ADDITIONAL PRODUCT NOTES   |
| Embroidered Textiles Are Not, Guaranteed For Precise Color, Matching And Colorfastness., Color Placement Of Embroidery, May Vary. All Measurements, Quoted For Repeats Are, Approximate. |