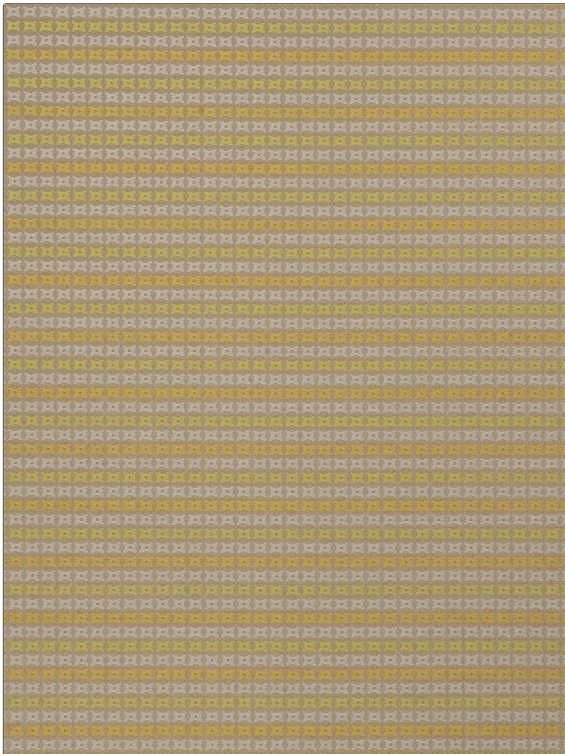


**PATTERN** Alethea  
**COLOR** Lime Flax

<b>BRAND</b>	<b>APPLICATION</b>
Fabricut	Fabric
<b>USES</b>	<b>CATEGORIES</b>
Upholstery	Wovens, Crypton
<b>COLORS</b>	<b>DESIGN TYPES</b>
Linen, Light Green	Check / Plaid, Contemporary / Modern, Dots / Circles
<b>SCALE</b>	<b>RAILROADED</b>
Small	Not Railroaded



<b>WIDTH</b>	<b>FINISH</b>	<b>VERTICAL REPEAT</b>	<b>HORIZONTAL REPEAT</b>
55.00 in (139.70 cm)	Crypton	1.25 in (3.18 cm)	0.40 in (1.02 cm)
<b>CONTENT</b>	<b>BACKING</b>	<b>FIRE CODES</b>	<b>DOUBLE RUBS</b>
100% Polyester	Crypton® Backing	UFAC Class I / NFPA 260	Exceeds 51,000 Double Rubs (Wyzenbeek Method)
<b>PRODUCT NUMBER</b>	<b>COUNTRY</b>	<b>CLEANING CODES</b>	
6365003	USA	W	

**ADDITIONAL PRODUCT NOTES**

Crypton, Crypton® Backing, Exclusive Pattern