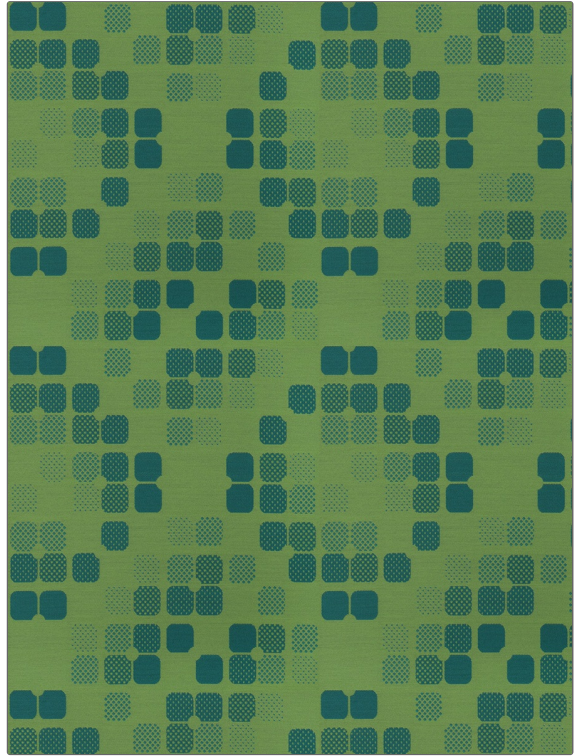


PATTERN Yara
COLOR Teal Lime

BRAND	APPLICATION
Fabricut	Fabric
USES	CATEGORIES
Upholstery	Wovens, Crypton, Eco / Environment Plus
COLORS	DESIGN TYPES
Green	Check / Plaid, Contemporary / Modern, Abstract
SCALE	RAILROADED
Medium	Not Railroaded



WIDTH	FINISH	VERTICAL REPEAT	HORIZONTAL REPEAT
56.00 in (142.24 cm)	Crypton	16.50 in (41.91 cm)	14.90 in (37.85 cm)
CONTENT	BACKING	FIRE CODES	DOUBLE RUBS
58% Polyester, 42% Recycled Polyester	Crypton® Backing	UFAC Class I / NFPA 260	Exceeds 60,000 Double Rubs (Wyzenbeek Method)
PRODUCT NUMBER	COUNTRY	CLEANING CODES	
6365801	USA	W	

ADDITIONAL PRODUCT NOTES

Crypton, Crypton® Backing, Exclusive Pattern