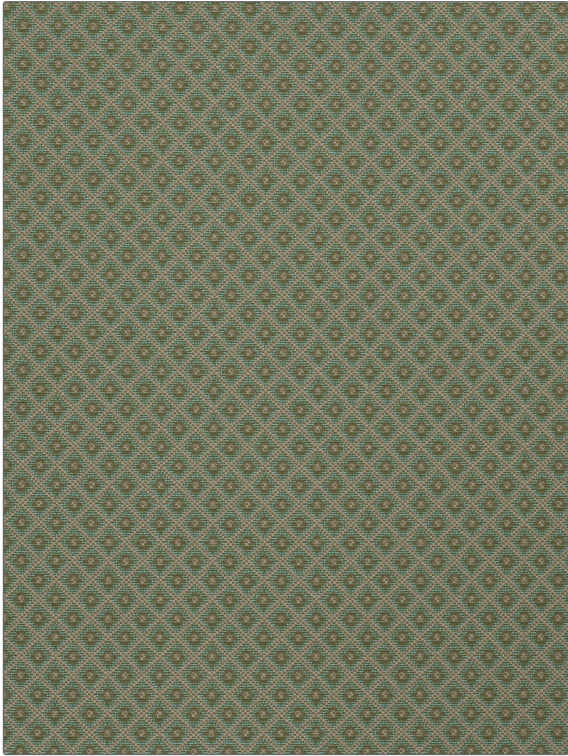


**PATTERN** Belinda  
**COLOR** Wintergreen

<b>BRAND</b>	<b>APPLICATION</b>
Fabricut	Fabric
<b>USES</b>	<b>CATEGORIES</b>
Upholstery	Wovens, Crypton
<b>COLORS</b>	<b>DESIGN TYPES</b>
Aqua / Teal, Light Green	Diamond
<b>SCALE</b>	<b>RAILROADED</b>
Small	Not Railroaded



<b>WIDTH</b>	<b>FINISH</b>	<b>VERTICAL REPEAT</b>	<b>HORIZONTAL REPEAT</b>
54.00 in (137.16 cm)	Crypton	0.75 in (1.90 cm)	0.75 in (1.90 cm)
<b>CONTENT</b>	<b>BACKING</b>	<b>FIRE CODES</b>	<b>DOUBLE RUBS</b>
68% Acrylic 32% Polyester	Crypton® Backing	UFAC Class I / NFPA 260	Exceeds 50,000 Double Rubs (Wyzenbeek Method)
<b>PRODUCT NUMBER</b>	<b>COUNTRY</b>	<b>CLEANING CODES</b>	
6367204	USA	W	

**ADDITIONAL PRODUCT NOTES**

Crypton, Crypton® Backing, Exclusive Pattern