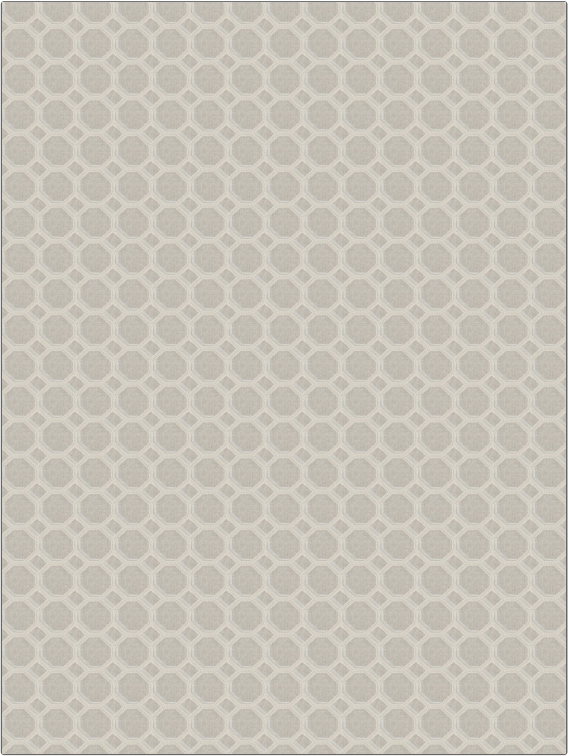


| | |
|---------|----------|
| PATTERN | Petrillo |
| COLOR | 04 |

| | |
|------------------|--|
| BRAND | APPLICATION |
| Fabricut | Fabric |
| USES | CATEGORIES |
| Bedding, Drapery | Crewels / Embroideries |
| COLORS | DESIGN TYPES |
| Linen | Embroidery, Geometric, Lattice / Fretwork, Contemporary / Modern |
| SCALE | RAILROADED |
| Medium | Not Railroaded |



| | | | |
|----------------------|-------------------|-------------------|--|
| WIDTH | VERTICAL REPEAT | HORIZONTAL REPEAT | CONTENT |
| 51.00 in (129.54 cm) | 3.00 in (7.62 cm) | 3.25 in (8.26 cm) | Base: 70% Polyester, 30% Linen, Embroidery: 100% Polyetser |
| BACKING | PRODUCT NUMBER | COUNTRY | CLEANING CODES |
| | 6371904 | India | S |

| |
|---|
| ADDITIONAL PRODUCT NOTES |
| Exclusive Pattern, Embroidered Textiles Are Not, Guaranteed For Precise Color, Matching And Colorfastness., Color Placement Of Embroidery, May Vary. All Measurements, Quoted For Repeats Are, Approximate. |