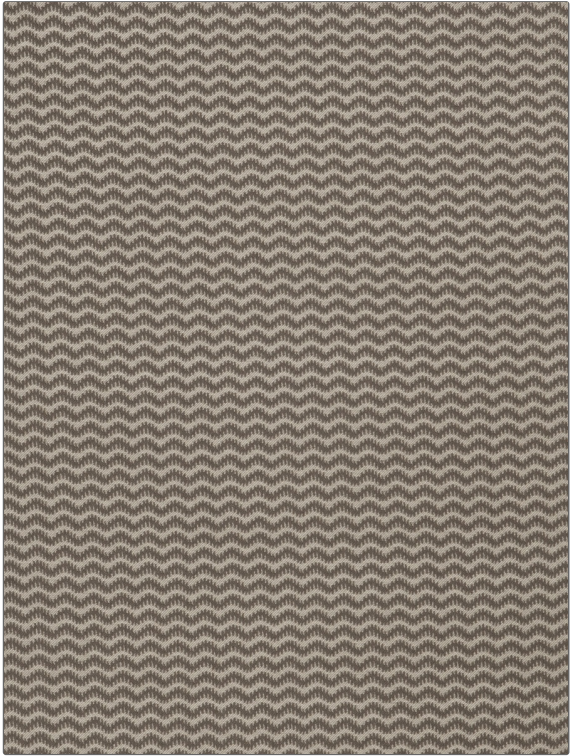


**PATTERN** Royal Flush  
**COLOR** 03

|                                |  |
|--------------------------------|--|
| <b>BRAND</b>                   | <b>APPLICATION</b>                                 |
| Fabricut                       | Fabric   |
| <b>USES</b>                    | <b>CATEGORIES</b>                                  |
| Bedding, Drapery, Multipurpose | Wovens   |
| <b>COLORS</b>                  | <b>DESIGN TYPES</b>                                |
| Grey                           | Small Scale Woven, Contemporary / Modern, Bargello |
| <b>SCALE</b>                   | <b>RAILROADED</b>                                  |
| Small                          | Not Railroaded                                     |



|                      |                         |   |                          |
|----------------------|-------------------------|---|--------------------------|
| <b>WIDTH</b>         | <b>VERTICAL REPEAT</b>  | <b>HORIZONTAL REPEAT</b>                      | <b>CONTENT</b>           |
| 54.00 in (137.16 cm) | 0.37 in (0.94 cm)       | 0.62 in (1.57 cm)                             | 61% Rayon, 39% Polyester |
| <b>BACKING</b>       | <b>FIRE CODES</b>       | <b>DOUBLE RUBS</b>                            | <b>PRODUCT NUMBER</b>    |
|                      | UFAC Class I / NFPA 260 | Exceeds 15,000 Double Rubs (Wyzenbeek Method) | 6428703                  |
| <b>COUNTRY</b>       | <b>CLEANING CODES</b>   |   |                          |
| China                | S                       |   |                          |

**ADDITIONAL PRODUCT NOTES**

Ca Tb 117-2013