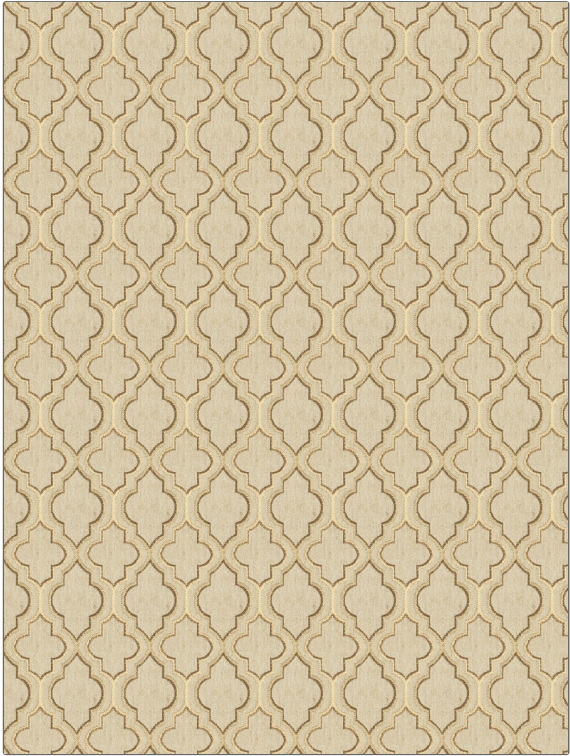


**PATTERN** Locket  
**COLOR** Caramel

<b>BRAND</b>	<b>APPLICATION</b>
Fabricut	Fabric
<b>USES</b>	<b>CATEGORIES</b>
Upholstery	Wovens
<b>COLORS</b>	<b>DESIGN TYPES</b>
Brown, Taupe / Tan	Jacquard Pattern, Lattice / Fretwork, Small Scale Woven
<b>SCALE</b>	<b>RAILOADED</b>
Small	Railroaded



<b>WIDTH</b>	<b>FINISH</b>	<b>VERTICAL REPEAT</b>	<b>HORIZONTAL REPEAT</b>
54.00 in (137.16 cm)	Soil & Stain Repellent Finish	2.80 in (7.11 cm)	3.50 in (8.89 cm)
<b>CONTENT</b>	<b>BACKING</b>	<b>FIRE CODES</b>	<b>DOUBLE RUBS</b>
55% Polyester, 25% Linen, 20% Rayon	100% Acrylic Backing	UFAC Class I / NFPA 260	Exceeds 30,000 Double Rubs (Wyzenbeek Method)
<b>PRODUCT NUMBER</b>	<b>COUNTRY</b>	<b>CLEANING CODES</b>	
6430901	China	WS	

**ADDITIONAL PRODUCT NOTES**  
 Soil & Stain Repellent Finish, Pfas-Free, Ca Tb 117-2013, 100% Acrylic Backing, Shown Railroaded, Exclusive Pattern