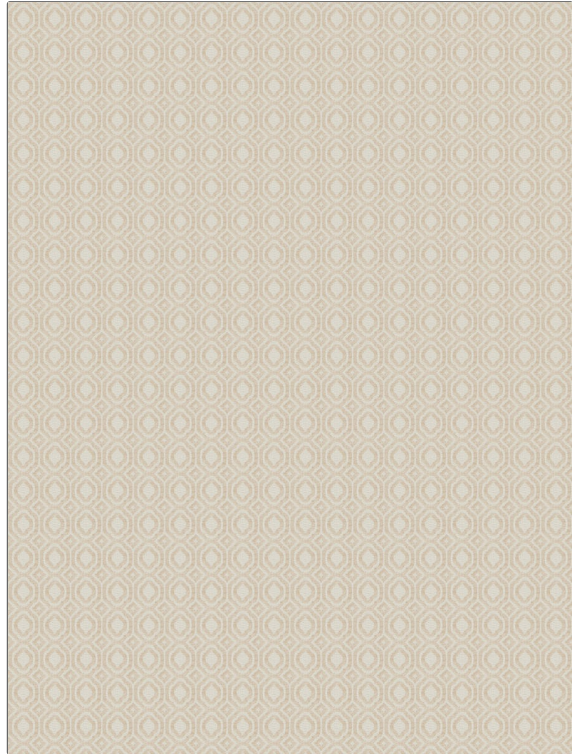


<b>PATTERN</b>	<b>Conservatory</b>
<b>COLOR</b>	<b>Conch</b>
<b>BRAND</b>	<b>APPLICATION</b>
<b>Fabricut</b>	<b>Fabric</b>
<b>USES</b>	<b>CATEGORIES</b>
<b>Upholstery</b>	<b>Wovens, Solids / Small Scale Patterns, Chenille</b>
<b>BOOK</b>	<b>COLORS</b>
<b>Color Studio Vol. IX Blush</b>	<b>Coral / Peach</b>
<b>DESIGN TYPES</b>	<b>SCALE</b>
<b>Jacquard Pattern, Lattice / Fretwork, Small Scale Woven, Medallion, Dots / Circles</b>	<b>Small</b>
<b>RAILROADED</b>	
<b>Not Railroaded</b>	



<b>WIDTH</b>	<b>FINISH</b>	<b>VERTICAL REPEAT</b>	<b>HORIZONTAL REPEAT</b>
<b>57.00 in (144.78 cm)</b>	<b>Soil &amp; Stain Repellent Finish</b>	<b>1.50 in (3.81 cm)</b>	<b>1.50 in (3.81 cm)</b>
<b>CONTENT</b>	<b>BACKING</b>	<b>FIRE CODES</b>	<b>DOUBLE RUBS</b>
<b>48% Rayon, 37% Cotton, 15% Polyester</b>		<b>UFAC Class I / NFPA 260</b>	<b>Exceeds 66,000 Double Rubs (Wyzenbeek Method)</b>
<b>PRODUCT NUMBER</b>	<b>DATE BOOKED</b>	<b>COUNTRY</b>	<b>CLEANING CODES</b>
<b>6439004</b>	<b>04/2018</b>	<b>USA</b>	<b>S</b>

<b>ADDITIONAL PRODUCT NOTES</b>
<b>Soil &amp; Stain Repellent Finish, Ca Tb 117-2013, Exclusive Pattern</b>