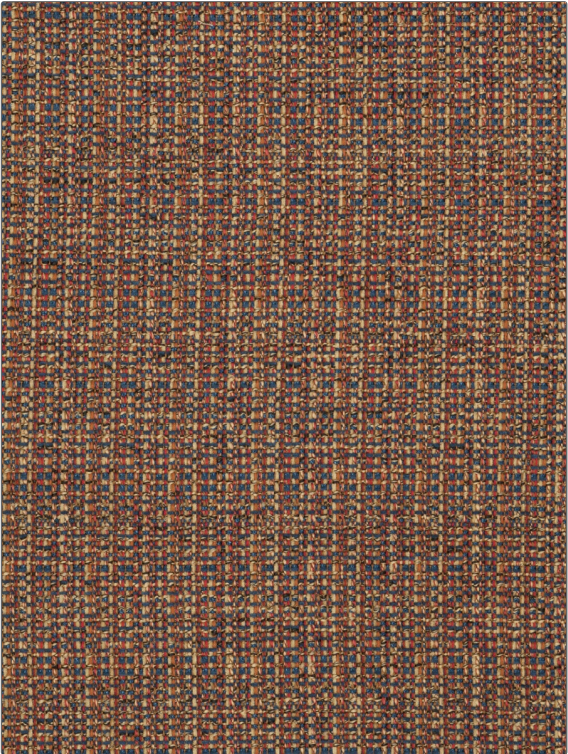


PATTERN	Cashing Out
COLOR	Multi

BRAND	APPLICATION
Fabricut	Fabric
USES	CATEGORIES
Upholstery	Wovens
COLORS	DESIGN TYPES
Blue, Red	Small Scale Woven, Texture Plain
SCALE	RAILROADED
Small	Not Railroaded



WIDTH	VERTICAL REPEAT	HORIZONTAL REPEAT	CONTENT
55.00 in (139.70 cm)	0.00 in (0.00 cm)	0.00 in (0.00 cm)	49% Polyester, 24% Cotton, 23% Acrylic, 4% Rayon
BACKING	FIRE CODES	DOUBLE RUBS	PRODUCT NUMBER
Light Acrylic Backing	UFAC Class I / NFPA 260	Exceeds 50,000 Double Rubs (Wyzenbeek Method)	6456001
COUNTRY	CLEANING CODES		
China	S		

ADDITIONAL PRODUCT NOTES
Ca Tb 117-2013, Light Acrylic Backing