

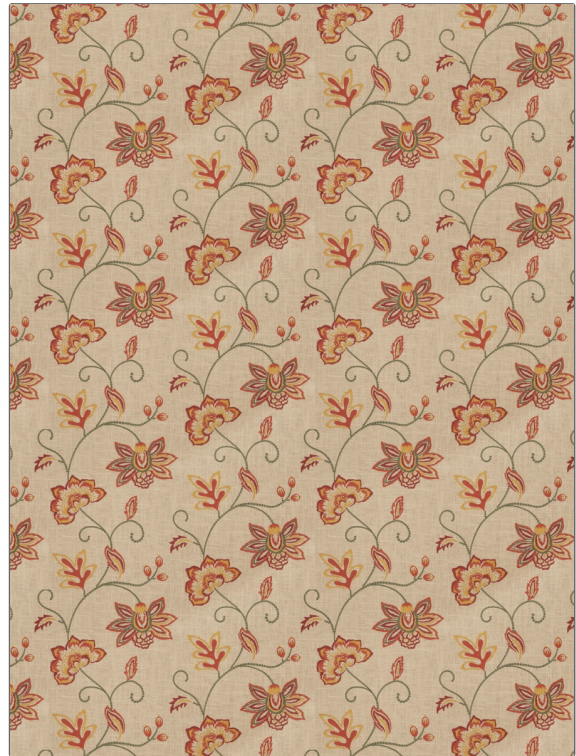
**PATTERN** Thames  
**COLOR** Henna

**BRAND**  
Fabricut  
**APPLICATION**  
Fabric

**USES**  
Bedding, Drapery  
**CATEGORIES**  
Crewels / Embroideries, Linen

**COLORS**  
Orange / Spice, Red  
**DESIGN TYPES**  
Embroidery, Floral

**SCALE**  
Medium  
**RAILROADED**  
Not Railroaded



WIDTH	VERTICAL REPEAT	HORIZONTAL REPEAT	CONTENT
53.00 in (134.62 cm)	15.50 in (39.37 cm)	25.50 in (64.77 cm)	<b>Embroidery: 100% Polyester, Base: 55% Linen, 45% Cotton</b>
BACKING	PRODUCT NUMBER	COUNTRY	CLEANING CODES
	6545504	China	S

**ADDITIONAL PRODUCT NOTES**

Exclusive Pattern, Embroidered Textiles Are Not, Guaranteed For Precise Color, Matching And Colorfastness., Color Placement Of Embroidery, May Vary. All Measurements, Quoted For Repeats Are, Approximate.