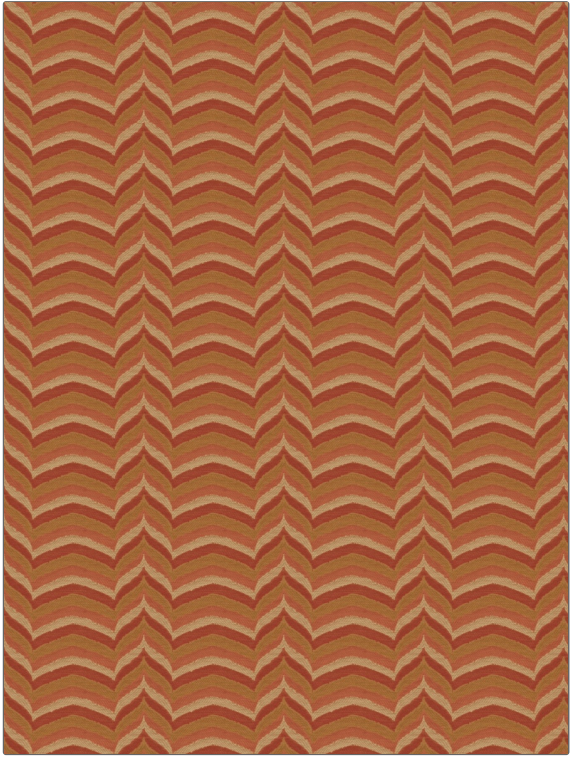


<b>PATTERN</b>	<b>Satie</b>
<b>COLOR</b>	<b>Persimmon</b>

<b>BRAND</b>	<b>APPLICATION</b>
<b>Fabricut</b>	<b>Fabric</b>
<b>USES</b>	<b>CATEGORIES</b>
<b>Bedding, Drapery, Multipurpose, Upholstery</b>	<b>Wovens</b>
<b>COLORS</b>	<b>DESIGN TYPES</b>
<b>Coral / Peach, Pink</b>	<b>Flamestitch, Chevron</b>
<b>SCALE</b>	<b>RAILROADED</b>
<b>Small</b>	<b>Not Railroaded</b>



<b>WIDTH</b>	<b>VERTICAL REPEAT</b>	<b>HORIZONTAL REPEAT</b>	<b>CONTENT</b>
<b>55.00 in (139.70 cm)</b>	<b>4.50 in (11.43 cm)</b>	<b>6.75 in (17.14 cm)</b>	<b>80% Rayon, 20% Polyester</b>
<b>BACKING</b>	<b>FIRE CODES</b>	<b>DOUBLE RUBS</b>	<b>PRODUCT NUMBER</b>
	<b>UFAC Class I / NFPA 260</b>	<b>Exceeds 51,000 Double Rubs (Wyzenbeek Method)</b>	<b>6545603</b>
<b>COUNTRY</b>	<b>CLEANING CODES</b>		
<b>China</b>	<b>S</b>		

<b>ADDITIONAL PRODUCT NOTES</b>
<b>Ca Tb 117-2013, Exclusive Pattern</b>