

PATTERN **Newport**
COLOR **135**

BRAND
Fabricut

APPLICATION
Fabric

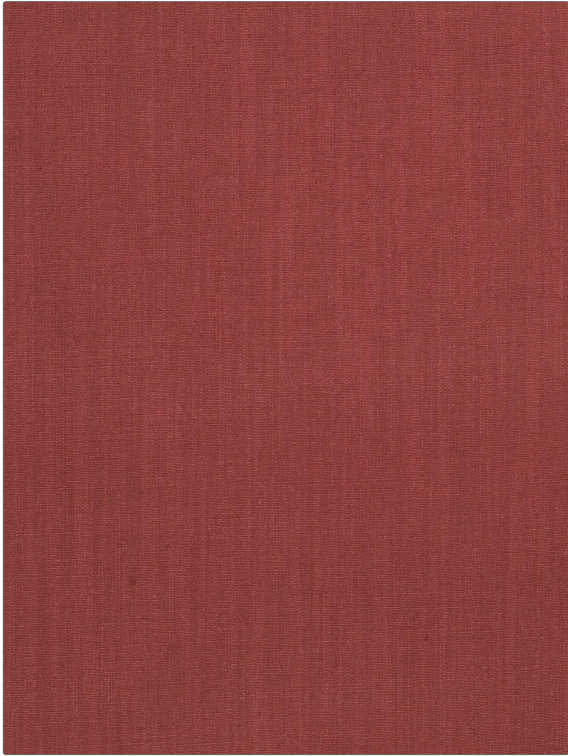
USES
Bedding, Drapery, Multipurpose, Upholstery

CATEGORIES
Solids / Small Scale Patterns, Eco / Environment Plus, Linen

COLORS
Red

DESIGN TYPES
Solid

RAILROADED
Not Railroaded



WIDTH	VERTICAL REPEAT	HORIZONTAL REPEAT	CONTENT
55.00 in (139.70 cm)	0.00 in (0.00 cm)	0.00 in (0.00 cm)	90% Polyester, 10% Linen
BACKING	FIRE CODES	DOUBLE RUBS	PRODUCT NUMBER
	UFAC Class I / NFPA 260, Passes MVS 302	Exceeds 110,000 Double Rubs (Wyzenbeek Method)	6730735
COUNTRY	CLEANING CODES		
China	S		

ADDITIONAL PRODUCT NOTES

Oeko Tex Standard 100, Ca Tb 117-2013, Exclusive Pattern, Eco / Environment Plus