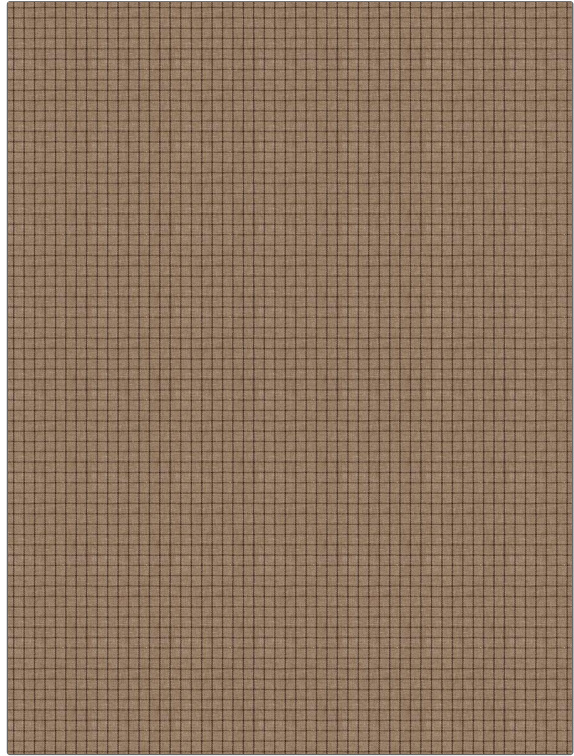


PATTERN	Brookhill
COLOR	Teak

BRAND	APPLICATION
Fabricut	Fabric
USES	CATEGORIES
Multipurpose, Upholstery	Wovens, Solids / Small Scale Patterns
COLORS	DESIGN TYPES
Grey, Brown	Small Scale Woven, Check / Plaid
SCALE	RAILROADED
Small	Not Railroaded



WIDTH	VERTICAL REPEAT	HORIZONTAL REPEAT	CONTENT
54.00 in (137.16 cm)	0.50 in (1.27 cm)	0.50 in (1.27 cm)	60% Polyester, 30% Cotton, 10% Linen
BACKING	FIRE CODES	DOUBLE RUBS	PRODUCT NUMBER
	UFAC Class I / NFPA 260	Exceeds 50,000 Double Rubs (Wyzenbeek Method)	6833001
COUNTRY	CLEANING CODES		
India	S		

ADDITIONAL PRODUCT NOTES
Ca Tb 117-2013