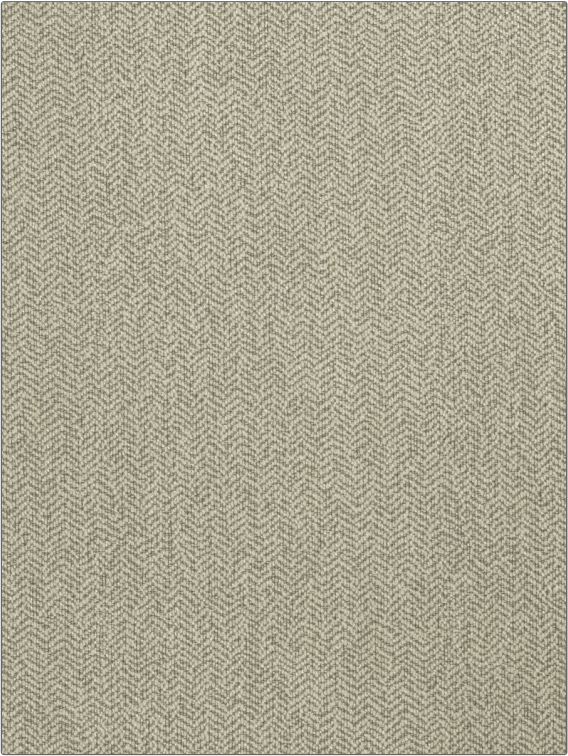


| | |
|---------|-------------|
| PATTERN | Homestretch |
| COLOR | 05 |

| | |
|-------------|-------------------------------------|
| BRAND | APPLICATION |
| Fabricut | Fabric |
| USES | CATEGORIES |
| Upholstery | Crypton Home, Easy To Clean, Wovens |
| COLORS | DESIGN TYPES |
| Taupe / Tan | Herringbone, Texture Plain |
| SCALE | RAILROADED |
| Small | Railroaded |



| | | | |
|--------------------------------------|-------------------------------|-------------------------|---|
| WIDTH | FINISH | VERTICAL REPEAT | HORIZONTAL REPEAT |
| 56.00 in (142.24 cm) | Soil & Stain Repellent Finish | 0.50 in (1.27 cm) | 0.13 in (0.33 cm) |
| CONTENT | BACKING | FIRE CODES | DOUBLE RUBS |
| 44% Cotton, 38% Rayon, 18% Polyester | Acrylic / Latex Backing | UFAC Class I / NFPA 260 | Exceeds 51,000 Double Rubs (Wyzenbeek Method) |
| PRODUCT NUMBER | COUNTRY | CLEANING CODES | |
| 6858105 | USA | W | |

| |
|--|
| ADDITIONAL PRODUCT NOTES |
| Soil & Stain Repellent Finish, Ca Tb 117-2013, Anti-Bacterial / Anti-Microbial, Acrylic / Latex Backing, Shown Railroaded, Exclusive Pattern |