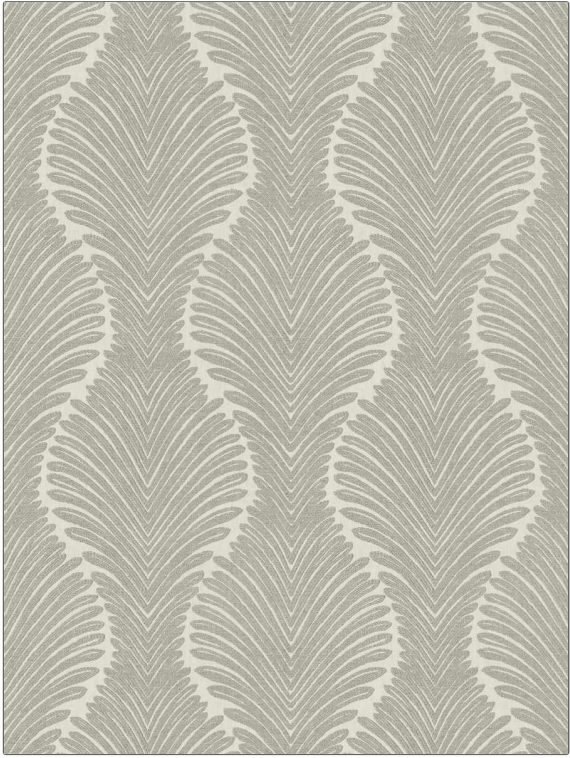


**PATTERN** Watercraft  
**COLOR** 02

<b>BRAND</b>	<b>APPLICATION</b>
Fabricut	Fabric
<b>USES</b>	<b>CATEGORIES</b>
Bedding, Drapery, Multipurpose	Wovens
<b>COLORS</b>	<b>DESIGN TYPES</b>
Grey	Leaves, Contemporary / Modern
<b>SCALE</b>	<b>RAILOADED</b>
Large	Not Railed



<b>WIDTH</b>	<b>VERTICAL REPEAT</b>	<b>HORIZONTAL REPEAT</b>	<b>CONTENT</b>
54.00 in (137.16 cm)	16.50 in (41.91 cm)	13.75 in (34.92 cm)	51% Cotton, 49% Polyester
<b>BACKING</b>	<b>FIRE CODES</b>	<b>DOUBLE RUBS</b>	<b>PRODUCT NUMBER</b>
	UFAC Class I, Does Not Contain FR Chemicals	Exceeds 100,000 Double Rubs (Wyzenbeek Method)	6950306
<b>COUNTRY</b>	<b>CLEANING CODES</b>		
India	S		

**ADDITIONAL PRODUCT NOTES**

Passes 26,000 Martindale Tst, Ca Tb 117-2013