

PATTERN **Marina Bay**  
COLOR **Coral**

## BRAND

**Fabricut**

## APPLICATION

**Fabric**

## USES

**Upholstery**

## CATEGORIES

**Bella - Dura, Outdoor, Easy  
To Clean, Wovens**

## BOOK

**Bella Dura Modern (2  
Books) Coast**

## COLORS

**Orange / Spice**

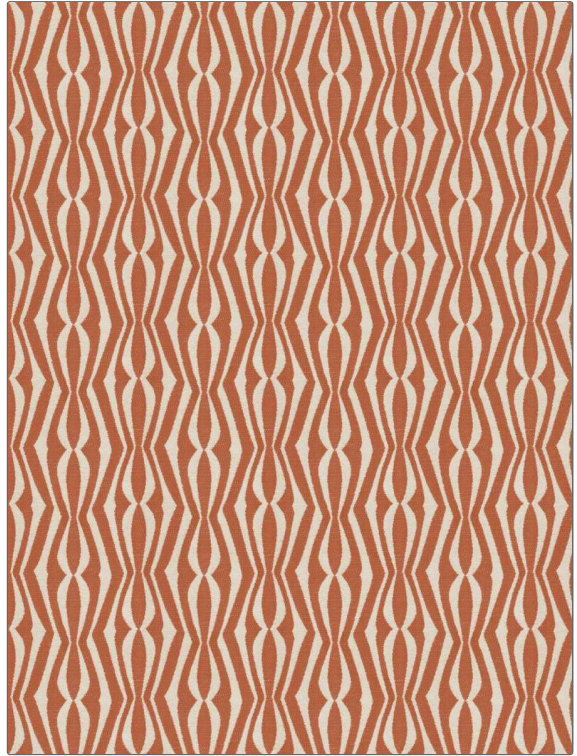
## DESIGN TYPES

**Geometric, Lattice /  
Fretwork, Contemporary /  
Modern**

## SCALE

**Medium**

## RAILROADED

**Not Railroaded**

## WIDTH

**53.00 in (134.62 cm)**

## FINISH

**Soil & Stain Repellent Finish**

## VERTICAL REPEAT

**6.00 in (15.24 cm)**

## HORIZONTAL REPEAT

**13.25 in (33.66 cm)**

## CONTENT

**73% Polyester, 27% Olefin**

## BACKING

## FIRE CODES

**UFAC Class I / NFPA 260**

## DOUBLE RUBS

**Exceeds 100,000 Double  
Rubs (Wyzenbeek Method)**

## PRODUCT NUMBER

**7374602**

## DATE BOOKED

**04/2023**

## COUNTRY

**USA**

## CLEANING CODES

**WS**

## ADDITIONAL PRODUCT NOTES

**Soil & Stain Repellent Finish, Pfas-Free, Bella Dura Home, Easy To Clean Finish, 1,000 Hours Light Fastness, Indoor /  
Outdoor, Ca Tb 117-2013, Exclusive Pattern**