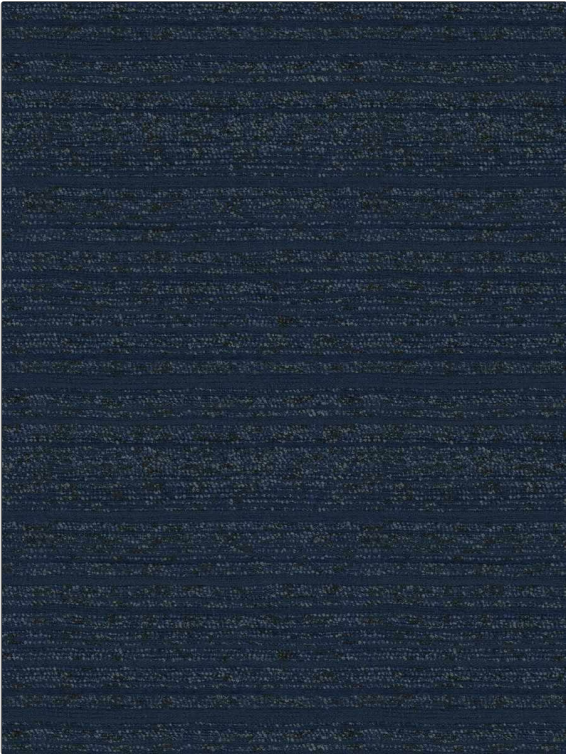


| | |
|---------|------------|
| PATTERN | Anna Maria |
| COLOR | 05 |

| | |
|----------------|--|
| BRAND | APPLICATION |
| Fabricut | Fabric |
| USES | CATEGORIES |
| Upholstery | Bella - Dura, Outdoor, Easy To Clean, Wovens |
| COLORS | DESIGN TYPES |
| Navy | Solid, Texture Plain |
| RAILROADED | |
| Not Railroaded | |



| | | | |
|---------------------------|-------------------------------|-------------------------|---|
| WIDTH | FINISH | VERTICAL REPEAT | HORIZONTAL REPEAT |
| 54.00 in (137.16 cm) | Soil & Stain Repellent Finish | 0.00 in (0.00 cm) | 0.00 in (0.00 cm) |
| CONTENT | BACKING | FIRE CODES | DOUBLE RUBS |
| 58% Polyester, 42% Olefin | | UFAC Class I / NFPA 260 | Exceeds 50,000 Double Rubs (Wyzenbeek Method) |
| PRODUCT NUMBER | COUNTRY | CLEANING CODES | |
| 7376205 | USA | WS | |

| |
|--|
| ADDITIONAL PRODUCT NOTES |
| Soil & Stain Repellent Finish, Pfas-Free, Bella Dura Home, Easy To Clean Finish, 1,000 Hours Light Fastness, Indoor / Outdoor, Ca Tb 117-2013, Exclusive Pattern |