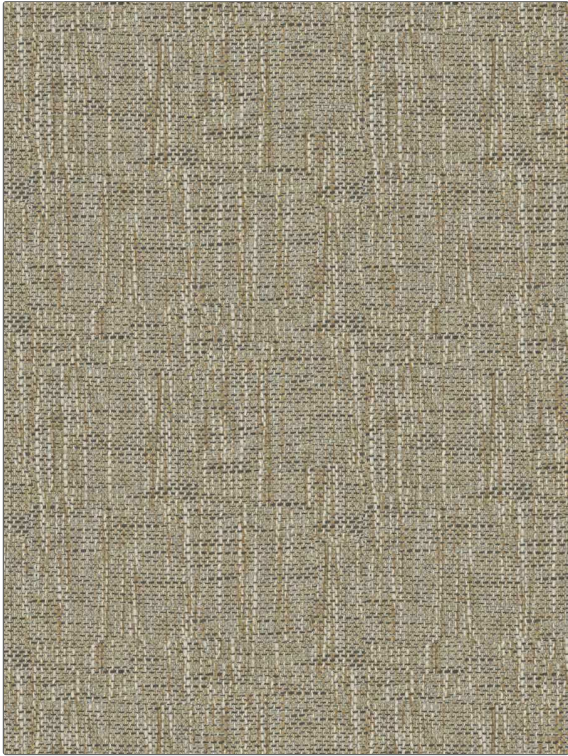


PATTERN Manchester
COLOR Fawn

BRAND	APPLICATION
Fabricut	Fabric
USES	CATEGORIES
Upholstery	Easy To Clean, Fibreguard, Wovens, Solids / Small Scale Patterns
BOOK	COLORS
Manchester	Taupe / Tan
DESIGN TYPES	SCALE
Texture Plain	Small
RAILROADED	
Not Railroaded	



WIDTH	FINISH	VERTICAL REPEAT	HORIZONTAL REPEAT
55.00 in (139.70 cm)	Fibreguard	0.00 in (0.00 cm)	0.00 in (0.00 cm)
CONTENT	BACKING	FIRE CODES	DOUBLE RUBS
54% Acrylic, 46% Polyester		UFAC Class I / NFPA 260, Passes MVS 302	Exceeds 72,000 Double Rubs (Wyzenbeek Method)
PRODUCT NUMBER	DATE BOOKED	COUNTRY	CLEANING CODES
7476101	11/2022	Turkey	WW

ADDITIONAL PRODUCT NOTES

Fibreguard, Pfas-Free, Easy To Clean Finish, Passes 40,000 Martindale Tst, Oeko Tex Standard 100, Mildew Resistant, Iso 14001, Ca Tb 117-2013, Anti-Bacterial / Anti-Microbial, Exclusive Pattern, Eco / Environment Plus