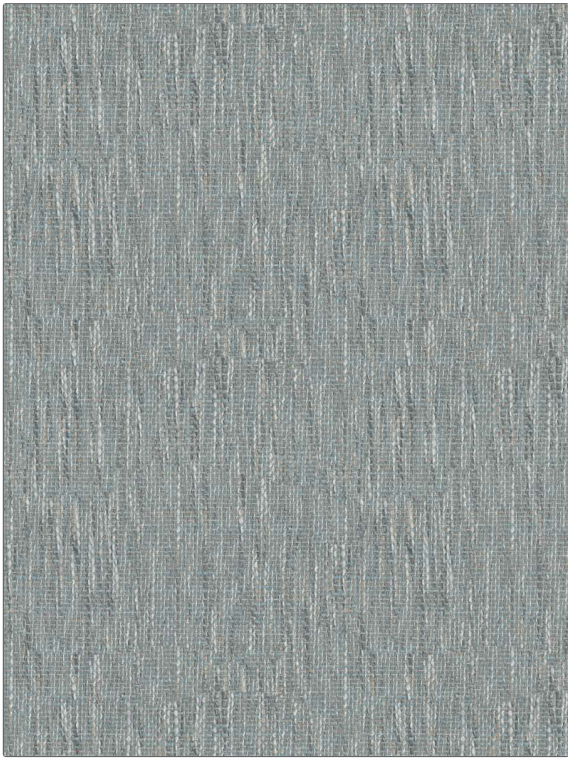


**PATTERN** Manchester  
**COLOR** Sky

<b>BRAND</b>	<b>APPLICATION</b>
Fabricut	Fabric
<b>USES</b>	<b>CATEGORIES</b>
Upholstery	Easy To Clean, Fibreguard, Wovens, Solids / Small Scale Patterns
<b>BOOK</b>	<b>COLORS</b>
Manchester	Light Blue, Aqua / Teal
<b>DESIGN TYPES</b>	<b>SCALE</b>
Texture Plain	Small
<b>RAILROADED</b>	
Not Railroaded	



<b>WIDTH</b>	<b>FINISH</b>	<b>VERTICAL REPEAT</b>	<b>HORIZONTAL REPEAT</b>
55.00 in (139.70 cm)	Fibreguard	0.00 in (0.00 cm)	0.00 in (0.00 cm)
<b>CONTENT</b>	<b>BACKING</b>	<b>FIRE CODES</b>	<b>DOUBLE RUBS</b>
54% Acrylic, 46% Polyester		UFAC Class I / NFPA 260, Passes MVS 302	Exceeds 72,000 Double Rubs (Wyzenbeek Method)
<b>PRODUCT NUMBER</b>	<b>DATE BOOKED</b>	<b>COUNTRY</b>	<b>CLEANING CODES</b>
7476105	11/2022	Turkey	WW

**ADDITIONAL PRODUCT NOTES**

Fibreguard, Pfas-Free, Easy To Clean Finish, Passes 40,000 Martindale Tst, Oeko Tex Standard 100, Mildew Resistant, Iso 14001, Ca Tb 117-2013, Anti-Bacterial / Anti-Microbial, Exclusive Pattern, Eco / Environment Plus