

**PATTERN** Manchester  
**COLOR** Partridge

**BRAND**  
**APPLICATION**

**Fabricut** **Fabric**

**USES**  
**CATEGORIES**

**Upholstery** **Easy To Clean, Fibreguard, Wovens, Solids / Small Scale Patterns**

**BOOK**  
**COLORS**

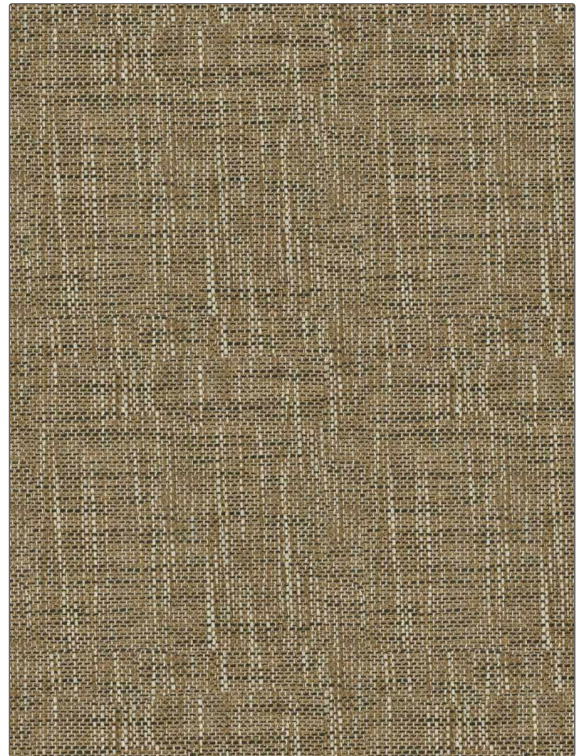
**Manchester** **Taupe / Tan**

**DESIGN TYPES**  
**SCALE**

**Texture Plain** **Small**

**RAILROADED**

**Not Railroaded**



WIDTH	FINISH	VERTICAL REPEAT	HORIZONTAL REPEAT
55.00 in (139.70 cm)	Fibreguard	0.00 in (0.00 cm)	0.00 in (0.00 cm)
CONTENT	BACKING	FIRE CODES	DOUBLE RUBS
54% Acrylic, 46% Polyester		UFAC Class I / NFPA 260, Passes MVS 302	Exceeds 72,000 Double Rubs (Wyzenbeek Method)
PRODUCT NUMBER	DATE BOOKED	COUNTRY	CLEANING CODES
7476111	11/2022	Turkey	WW

## ADDITIONAL PRODUCT NOTES

Fibreguard, Pfas-Free, Easy To Clean Finish, Passes 40,000 Martindale Tst, Oeko Tex Standard 100, Mildew Resistant, Iso 14001, Ca Tb 117-2013, Anti-Bacterial / Anti-Microbial, Exclusive Pattern, Eco / Environment Plus