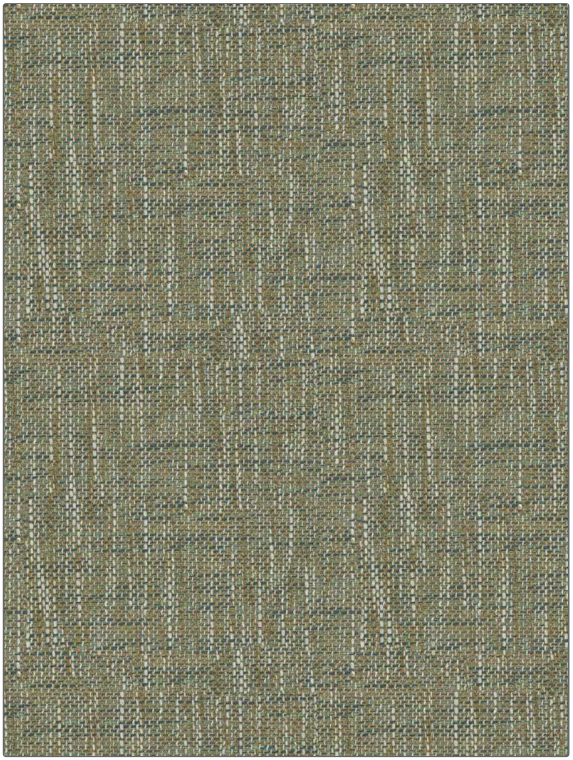


PATTERN Manchester
COLOR Capri

| | |
|---------------------|--|
| BRAND | APPLICATION |
| Fabricut | Fabric |
| USES | CATEGORIES |
| Upholstery | Easy To Clean, Fibreguard, Wovens, Solids / Small Scale Patterns |
| BOOK | COLORS |
| Manchester | Aqua / Teal |
| DESIGN TYPES | SCALE |
| Texture Plain | Small |
| RAILROADED | |
| Not Railroaded | |



| | | | |
|----------------------------|--------------------|---|---|
| WIDTH | FINISH | VERTICAL REPEAT | HORIZONTAL REPEAT |
| 55.00 in (139.70 cm) | Fibreguard | 0.00 in (0.00 cm) | 0.00 in (0.00 cm) |
| CONTENT | BACKING | FIRE CODES | DOUBLE RUBS |
| 54% Acrylic, 46% Polyester | | UFAC Class I / NFPA 260, Passes MVS 302 | Exceeds 72,000 Double Rubs (Wyzenbeek Method) |
| PRODUCT NUMBER | DATE BOOKED | COUNTRY | CLEANING CODES |
| 7476141 | 11/2022 | Turkey | WW |

ADDITIONAL PRODUCT NOTES

Fibreguard, Pfas-Free, Easy To Clean Finish, Passes 40,000 Martindale Tst, Oeko Tex Standard 100, Mildew Resistant, Iso 14001, Ca Tb 117-2013, Anti-Bacterial / Anti-Microbial, Exclusive Pattern, Eco / Environment Plus