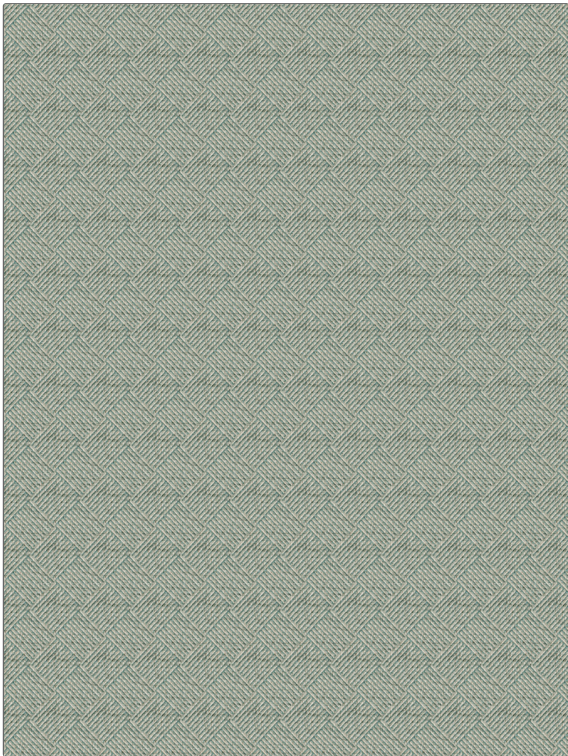


**PATTERN** Offset  
**COLOR** Tile

<b>BRAND</b>	<b>APPLICATION</b>
Fabricut	Fabric
<b>USES</b>	<b>CATEGORIES</b>
Upholstery	Wovens, Solids / Small Scale Patterns, Chenille
<b>COLORS</b>	<b>DESIGN TYPES</b>
Aqua / Teal	Small Scale Woven, Abstract, Diamond
<b>SCALE</b>	<b>RAILROADED</b>
Small	Not Railroaded



<b>WIDTH</b>	<b>FINISH</b>	<b>VERTICAL REPEAT</b>	<b>HORIZONTAL REPEAT</b>
54.00 in (137.16 cm)	Soil & Stain Repellent Finish	4.70 in (11.94 cm)	2.40 in (6.10 cm)
<b>CONTENT</b>	<b>BACKING</b>	<b>FIRE CODES</b>	<b>DOUBLE RUBS</b>
61% Acrylic, 39% Polyester		UFAC Class I / NFPA 260	Exceeds 30,000 Double Rubs (Wyzenbeek Method)
<b>PRODUCT NUMBER</b>	<b>COUNTRY</b>	<b>CLEANING CODES</b>	
7539102	Turkey	S	

**ADDITIONAL PRODUCT NOTES**

Soil & Stain Repellent Finish, Passes 20,000 Martindale Tst, Ca Tb 117-2013, Exclusive Pattern