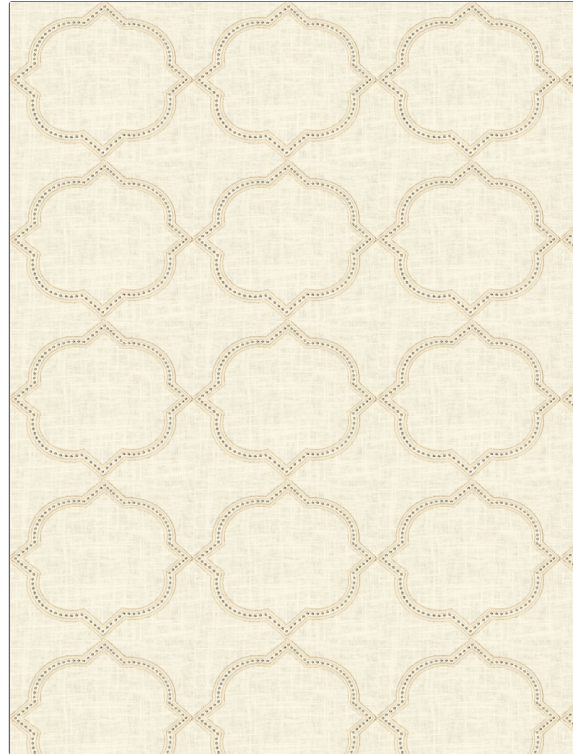


| | |
|---|-------------------------------|
| PATTERN | Orsay |
| COLOR | Natural |
| BRAND | APPLICATION |
| Fabricut | Fabric |
| USES | CATEGORIES |
| Bedding, Drapery | Crewels / Embroideries |
| BOOK | COLORS |
| French General Vol. II Musee | Beige, Taupe / Tan |
| DESIGN TYPES | SCALE |
| Embroidery, Lattice / Fretwork, Ogee | Medium |
| RAILROADED | |
| Not Railroaded | |



| | | | |
|-----------------------------|---------------------------|---------------------------|--|
| WIDTH | VERTICAL REPEAT | HORIZONTAL REPEAT | CONTENT |
| 52.00 in (132.08 cm) | 7.75 in (19.68 cm) | 8.75 in (22.22 cm) | Embroidery: 100% Viscose, Base: 55% Linen, 45% Cotton |
| BACKING | PRODUCT NUMBER | DATE BOOKED | COUNTRY |
| | 7562402 | 02/2017 | China |
| CLEANING CODES | | | |
| S | | | |

ADDITIONAL PRODUCT NOTES

Ca Tb 117-2013, Exclusive Pattern, Embroidered Textiles Are Not, Guaranteed For Precise Color, Matching And Colorfastness., Color Placement Of Embroidery, May Vary. All Measurements, Quoted For Repeats Are, Approximate.