

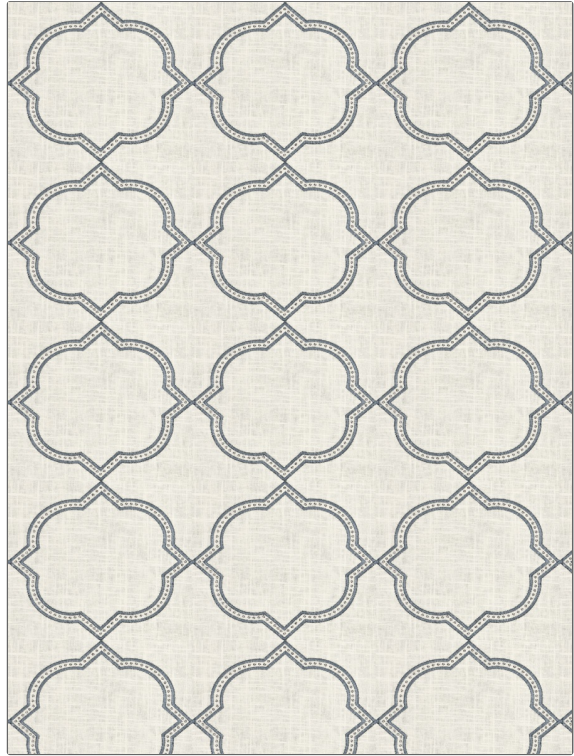
**PATTERN** Orsay  
**COLOR** 101

**BRAND**  
 Fabricut  
**APPLICATION**  
 Fabric

**USES**  
 Bedding, Drapery  
**CATEGORIES**  
 Crewels / Embroideries

**COLORS**  
 Blue  
**DESIGN TYPES**  
 Embroidery, Lattice / Fretwork, Ogee

**SCALE**  
 Medium  
**RAILROADED**  
 Not Railroaded



WIDTH	VERTICAL REPEAT	HORIZONTAL REPEAT	CONTENT
52.00 in (132.08 cm)	7.75 in (19.68 cm)	8.75 in (22.22 cm)	<b>Embroidery: 100% Viscose, Base: 55% Linen, 45% Cotton</b>
BACKING	PRODUCT NUMBER	COUNTRY	CLEANING CODES
	7562501	China	S

**ADDITIONAL PRODUCT NOTES**

Ca Tb 117-2013, Exclusive Pattern, Embroidered Textiles Are Not, Guaranteed For Precise Color, Matching And Colorfastness., Color Placement Of Embroidery, May Vary. All Measurements, Quoted For Repeats Are, Approximate.