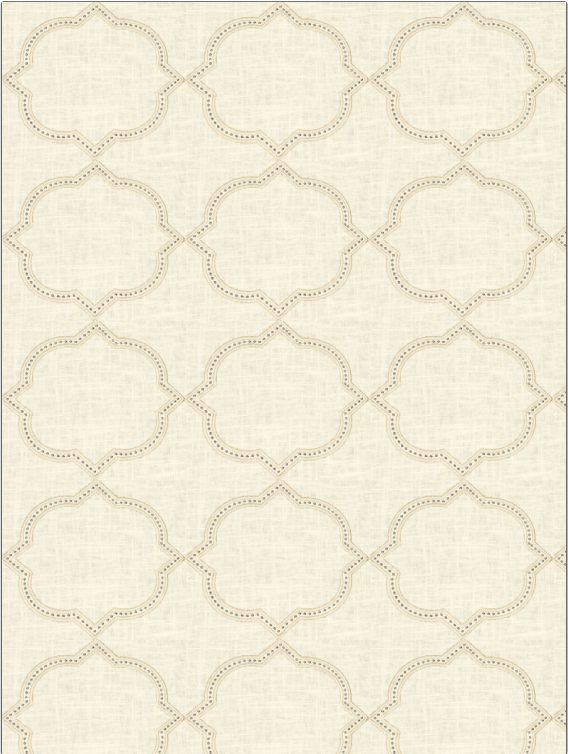


| | |
|---------|-------|
| PATTERN | Orsay |
| COLOR | 102 |

| | |
|--------------------|--------------------------------------|
| BRAND | APPLICATION |
| Fabricut | Fabric |
| USES | CATEGORIES |
| Bedding, Drapery | Crewels / Embroideries |
| COLORS | DESIGN TYPES |
| Beige, Taupe / Tan | Embroidery, Lattice / Fretwork, Ogee |
| SCALE | RAILOADED |
| Medium | Not Railroaded |



| | | | |
|----------------------|--------------------|--------------------|--|
| WIDTH | VERTICAL REPEAT | HORIZONTAL REPEAT | CONTENT |
| 52.00 in (132.08 cm) | 7.75 in (19.68 cm) | 8.75 in (22.22 cm) | Embroidery: 100% Viscose, Base: 55% Linen, 45% Cotton |
| BACKING | PRODUCT NUMBER | COUNTRY | CLEANING CODES |
| | 7562502 | China | S |

| |
|---|
| ADDITIONAL PRODUCT NOTES |
| Ca Tb 117-2013, Exclusive Pattern, Embroidered Textiles Are Not, Guaranteed For Precise Color, Matching And Colorfastness., Color Placement Of Embroidery, May Vary. All Measurements, Quoted For Repeats Are, Approximate. |