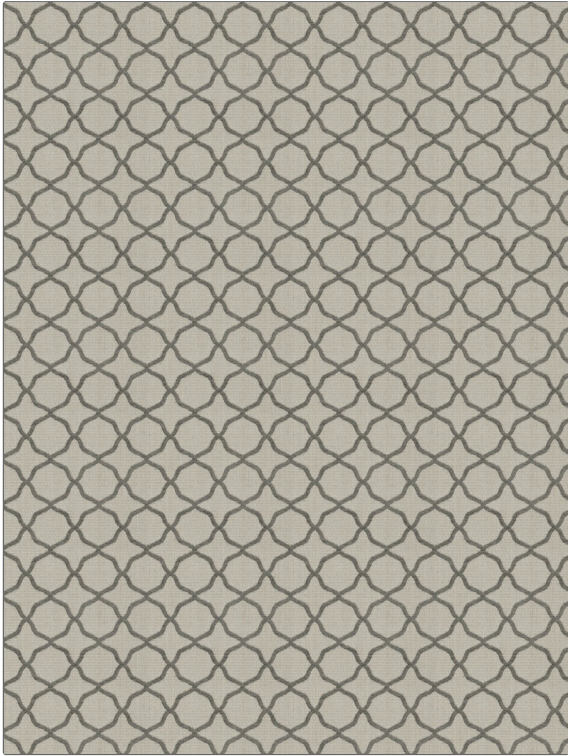


PATTERN **Basilica**
COLOR **101**

BRAND	APPLICATION
Fabricut	Fabric
USES	CATEGORIES
Bedding, Drapery, Multipurpose, Upholstery	Wovens, Chenille
COLORS	DESIGN TYPES
Black, Grey	Lattice / Fretwork, Small Scale Woven, Ogee
SCALE	RAILROADED
Small	Not Railroaded



WIDTH	VERTICAL REPEAT	HORIZONTAL REPEAT	CONTENT
54.00 in (137.16 cm)	2.12 in (5.38 cm)	2.25 in (5.72 cm)	73% Rayon, 27% Polyester
BACKING	FIRE CODES	DOUBLE RUBS	PRODUCT NUMBER
	UFAC Class I / NFPA 260	Exceeds 12,000 Double Rubs (Wyzenbeek Method)	7577701
COUNTRY	CLEANING CODES		
China	S		

ADDITIONAL PRODUCT NOTES

Ca Tb 117-2013, Exclusive Pattern