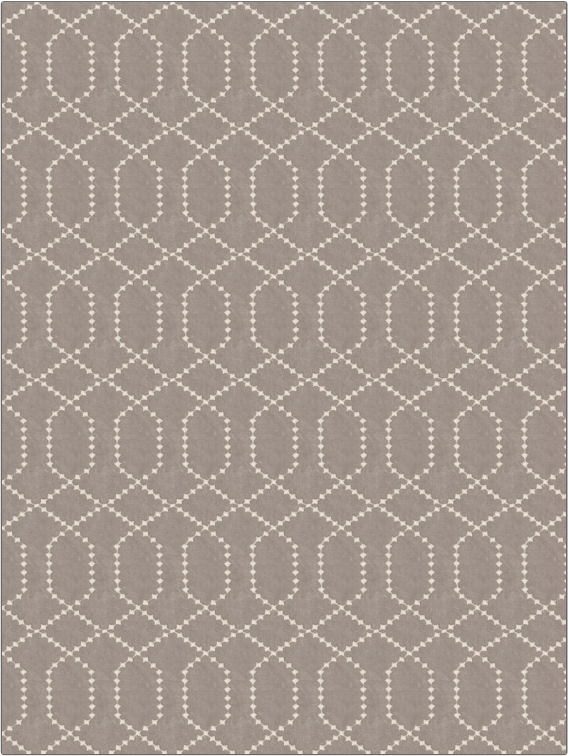


| | |
|---------|----------|
| PATTERN | Arterial |
| COLOR | Cream |

| | |
|--------------------------|--------------------------------|
| BRAND | APPLICATION |
| Fabricut | Fabric |
| USES | CATEGORIES |
| Drapery | Sheer, Crewels / Embroideries |
| COLORS | DESIGN TYPES |
| Beige, Off White / Ivory | Embroidery, Lattice / Fretwork |
| SCALE | RAILOADED |
| Medium | Not Railed |



| | | | |
|----------------------|--------------------|-------------------|--|
| WIDTH | VERTICAL REPEAT | HORIZONTAL REPEAT | CONTENT |
| 52.00 in (132.08 cm) | 6.25 in (15.88 cm) | 3.25 in (8.26 cm) | Embroidery: 100% Polyester, Base: 100% Polyester |
| BACKING | PRODUCT NUMBER | COUNTRY | CLEANING CODES |
| | 7597902 | China | S |

| |
|--|
| ADDITIONAL PRODUCT NOTES |
| Embroidered Textiles Are Not, Guaranteed For Precise Color, Matching And Colorfastness., Color Placement Of Embroidery, May Vary. All Measurements, Quoted For Repeats Are, Approximate. |