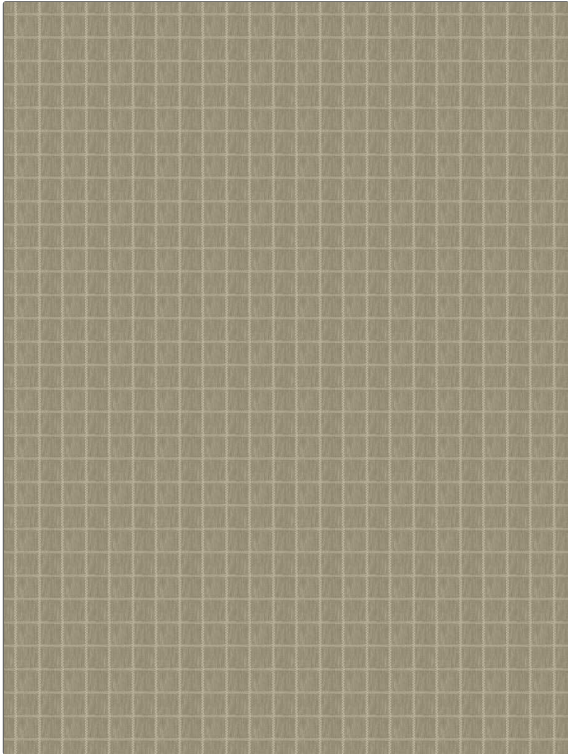


**PATTERN** Erebus  
**COLOR** Birch

<b>BRAND</b>	<b>APPLICATION</b>
Fabricut	Fabric
<b>USES</b>	<b>CATEGORIES</b>
Bedding, Drapery, Multipurpose	Wovens
<b>BOOK</b>	<b>COLORS</b>
Natural Layers (4 Books) Fog	Taupe / Tan, Linen
<b>DESIGN TYPES</b>	<b>SCALE</b>
Check / Plaid	Small
<b>RAILROADED</b>	
Not Railroaded	



<b>WIDTH</b>	<b>VERTICAL REPEAT</b>	<b>HORIZONTAL REPEAT</b>	<b>CONTENT</b>
54.00 in (137.16 cm)	1.00 in (2.54 cm)	1.12 in (2.84 cm)	39% Polyester, 38% Cotton, 16% Rayon, 7% Linen
<b>BACKING</b>	<b>FIRE CODES</b>	<b>DOUBLE RUBS</b>	<b>PRODUCT NUMBER</b>
	UFAC Class I / NFPA 260	Exceeds 20,000 Double Rubs (Wyzenbeek Method)	8073502
<b>DATE BOOKED</b>	<b>COUNTRY</b>	<b>CLEANING CODES</b>	
07/2022	India	S	

**ADDITIONAL PRODUCT NOTES**

Ca Tb 117-2013, Exclusive Pattern