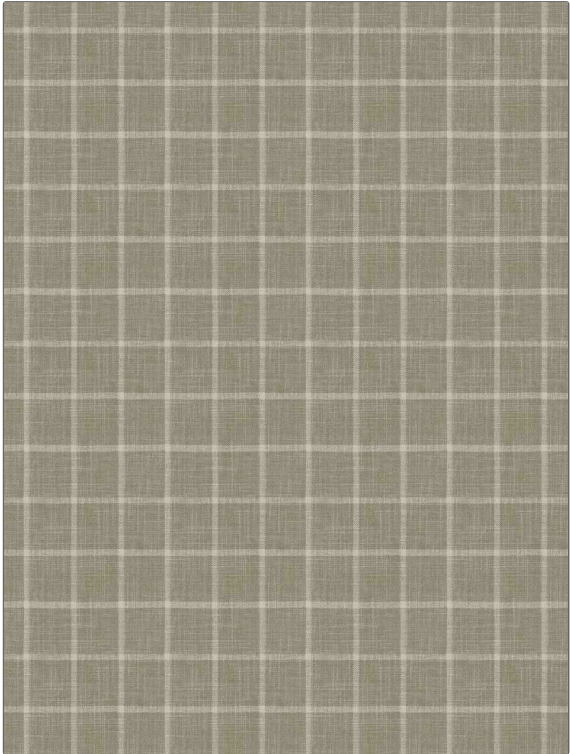


PATTERN Broxton
COLOR Truffle

BRAND	APPLICATION
Fabricut	Fabric
USES	CATEGORIES
Bedding, Drapery, Multipurpose	Wovens, Chenille
BOOK	COLORS
Natural Layers (4 Books) Fog	Grey, Taupe / Tan
DESIGN TYPES	SCALE
Check / Plaid	Medium
RAILROADED	
Not Railroaded	



WIDTH	VERTICAL REPEAT	HORIZONTAL REPEAT	CONTENT
55.00 in (139.70 cm)	2.50 in (6.35 cm)	2.25 in (5.72 cm)	72% Polyester, 23% Cotton, 5% Rayon
BACKING	FIRE CODES	DOUBLE RUBS	PRODUCT NUMBER
	UFAC Class I / NFPA 260	Exceeds 100,000 Double Rubs (Wyzenbeek Method)	8073903
DATE BOOKED	COUNTRY	CLEANING CODES	
07/2022	India	S	

ADDITIONAL PRODUCT NOTES

Ca Tb 117-2013