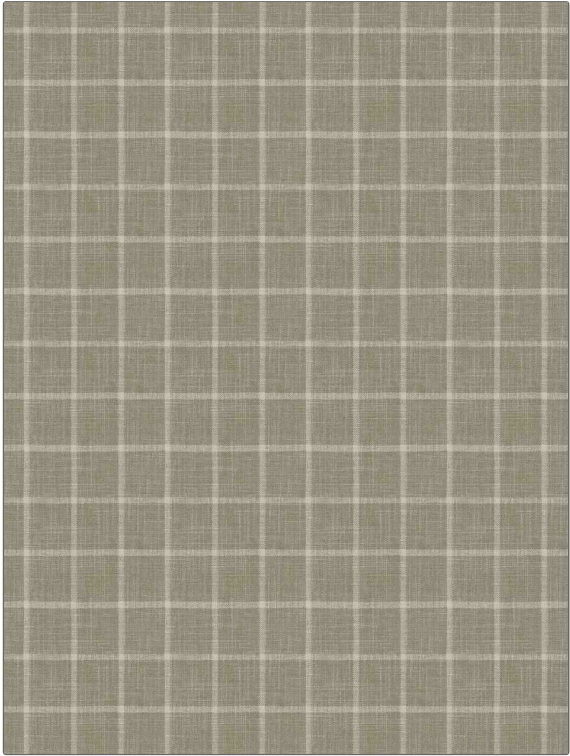


PATTERN Broxton
COLOR 03

BRAND	APPLICATION
Fabricut	Fabric
USES	CATEGORIES
Bedding, Drapery, Multipurpose	Wovens, Chenille
COLORS	DESIGN TYPES
Grey, Taupe / Tan	Check / Plaid
SCALE	RAILROADED
Medium	Not Railroaded



WIDTH	VERTICAL REPEAT	HORIZONTAL REPEAT	CONTENT
55.00 in (139.70 cm)	2.50 in (6.35 cm)	2.25 in (5.72 cm)	72% Polyester, 23% Cotton, 5% Rayon
BACKING	FIRE CODES	DOUBLE RUBS	PRODUCT NUMBER
	UFAC Class I / NFPA 260	Exceeds 100,000 Double Rubs (Wyzenbeek Method)	8074103
COUNTRY	CLEANING CODES		
India	S		

ADDITIONAL PRODUCT NOTES

Ca Tb 117-2013