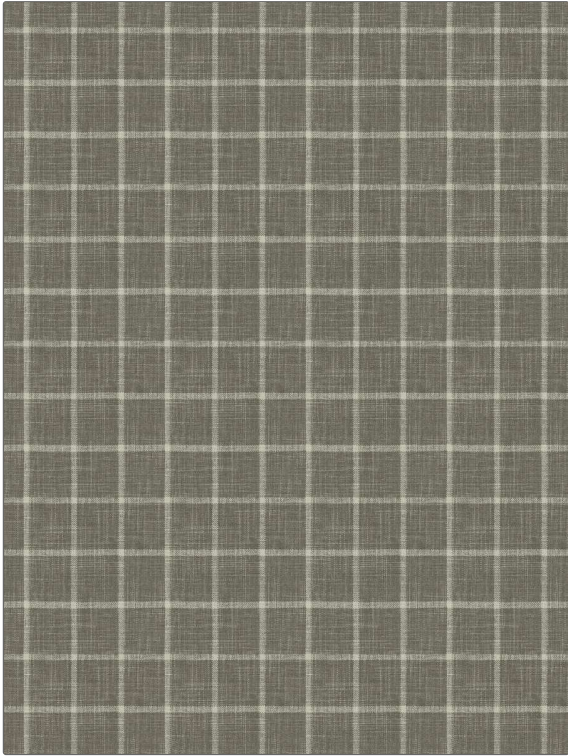


<b>PATTERN</b>	<b>Broxton</b>
<b>COLOR</b>	<b>05</b>

<b>BRAND</b>	<b>APPLICATION</b>
<b>Fabricut</b>	<b>Fabric</b>
<b>USES</b>	<b>CATEGORIES</b>
<b>Bedding, Drapery, Multipurpose</b>	<b>Wovens, Chenille</b>
<b>COLORS</b>	<b>DESIGN TYPES</b>
<b>Grey, Taupe / Tan</b>	<b>Check / Plaid</b>
<b>SCALE</b>	<b>RAILROADED</b>
<b>Medium</b>	<b>Not Railroaded</b>



<b>WIDTH</b>	<b>VERTICAL REPEAT</b>	<b>HORIZONTAL REPEAT</b>	<b>CONTENT</b>
<b>55.00 in (139.70 cm)</b>	<b>2.50 in (6.35 cm)</b>	<b>2.25 in (5.72 cm)</b>	<b>72% Polyester, 23% Cotton, 5% Rayon</b>
<b>BACKING</b>	<b>FIRE CODES</b>	<b>DOUBLE RUBS</b>	<b>PRODUCT NUMBER</b>
	<b>UFAC Class I / NFPA 260</b>	<b>Exceeds 100,000 Double Rubs (Wyzenbeek Method)</b>	<b>8074105</b>
<b>COUNTRY</b>	<b>CLEANING CODES</b>		
<b>India</b>	<b>S</b>		

<b>ADDITIONAL PRODUCT NOTES</b>
<b>Ca Tb 117-2013</b>