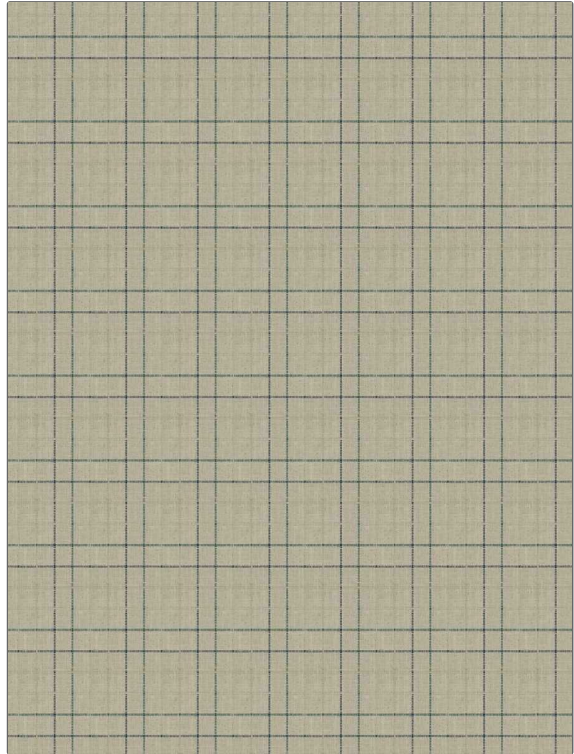


PATTERN	Bishop Check
COLOR	Rain
BRAND	APPLICATION
Fabricut	Fabric
USES	CATEGORIES
Bedding, Drapery, Multipurpose	Wovens
BOOK	COLORS
Avalon Lane	Blue, Aqua / Teal
DESIGN TYPES	SCALE
Check / Plaid	Medium
RAILROADED	
Not Railroaded	



WIDTH	VERTICAL REPEAT	HORIZONTAL REPEAT	CONTENT
55.00 in (139.70 cm)	3.75 in (9.52 cm)	3.75 in (9.52 cm)	33% Polyester, 33% Cotton, 17% Viscose, 17% Linen
BACKING	FIRE CODES	DOUBLE RUBS	PRODUCT NUMBER
	UFAC Class I	Exceeds 12,000 Double Rubs (Wyzenbeek Method)	8101002
DATE BOOKED	COUNTRY	CLEANING CODES	
11/2022	India	S	

ADDITIONAL PRODUCT NOTES
Ca Tb 117-2013