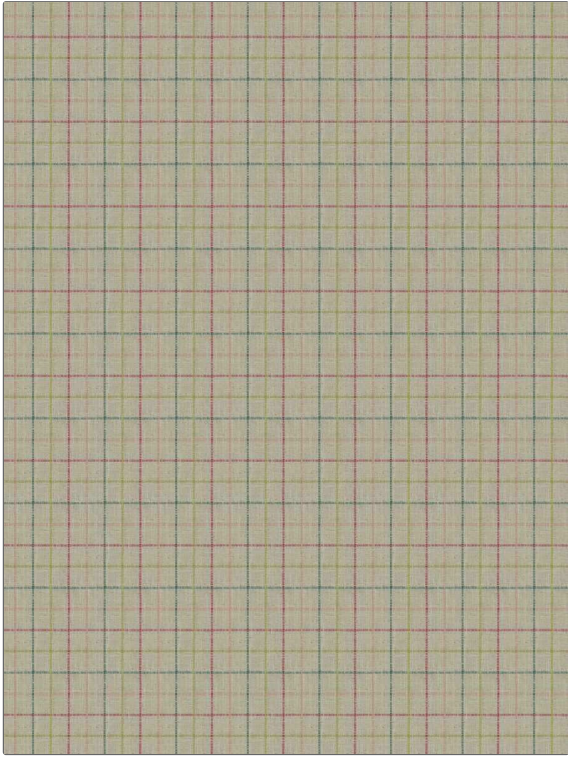


<b>PATTERN</b>	<b>Bishop Check</b>
<b>COLOR</b>	<b>04</b>

<b>BRAND</b>	<b>APPLICATION</b>
<b>Fabricut</b>	<b>Fabric</b>
<b>USES</b>	<b>CATEGORIES</b>
<b>Bedding, Drapery, Multipurpose</b>	<b>Wovens</b>
<b>COLORS</b>	<b>DESIGN TYPES</b>
<b>Pink, Multi-Color</b>	<b>Check / Plaid</b>
<b>SCALE</b>	<b>RAILROADED</b>
<b>Medium</b>	<b>Not Railroaded</b>



<b>WIDTH</b>	<b>VERTICAL REPEAT</b>	<b>HORIZONTAL REPEAT</b>	<b>CONTENT</b>
<b>55.00 in (139.70 cm)</b>	<b>3.75 in (9.52 cm)</b>	<b>3.75 in (9.52 cm)</b>	<b>33% Polyester, 33% Cotton, 17% Viscose, 17% Linen</b>
<b>BACKING</b>	<b>FIRE CODES</b>	<b>DOUBLE RUBS</b>	<b>PRODUCT NUMBER</b>
	<b>UFAC Class I</b>	<b>Exceeds 12,000 Double Rubs (Wyzenbeek Method)</b>	<b>8101204</b>
<b>COUNTRY</b>	<b>CLEANING CODES</b>		
<b>India</b>	<b>S</b>		

<b>ADDITIONAL PRODUCT NOTES</b>
<b>Ca Tb 117-2013</b>