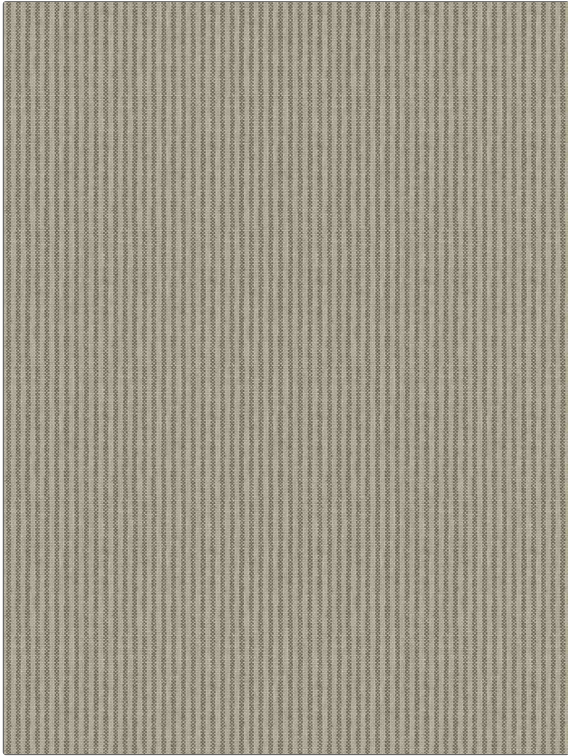


PATTERN Bitterroot
COLOR Woodland

BRAND	APPLICATION
Fabricut	Fabric
USES	CATEGORIES
Bedding, Drapery, Multipurpose, Upholstery	Wovens
BOOK	COLORS
Avalon Lane	Brown
DESIGN TYPES	SCALE
Stripes	Small
RAILROADED	
Not Railroaded	



WIDTH	VERTICAL REPEAT	HORIZONTAL REPEAT	CONTENT
54.00 in (137.16 cm)	0.00 in (0.00 cm)	0.12 in (0.30 cm)	55% Linen, 45% Cotton
BACKING	FIRE CODES	DOUBLE RUBS	PRODUCT NUMBER
	UFAC Class I	Exceeds 21,000 Double Rubs (Wyzenbeek Method)	8105402
DATE BOOKED	COUNTRY	CLEANING CODES	
11/2022	China	S	

ADDITIONAL PRODUCT NOTES

Ca Tb 117-2013, Sand Washed