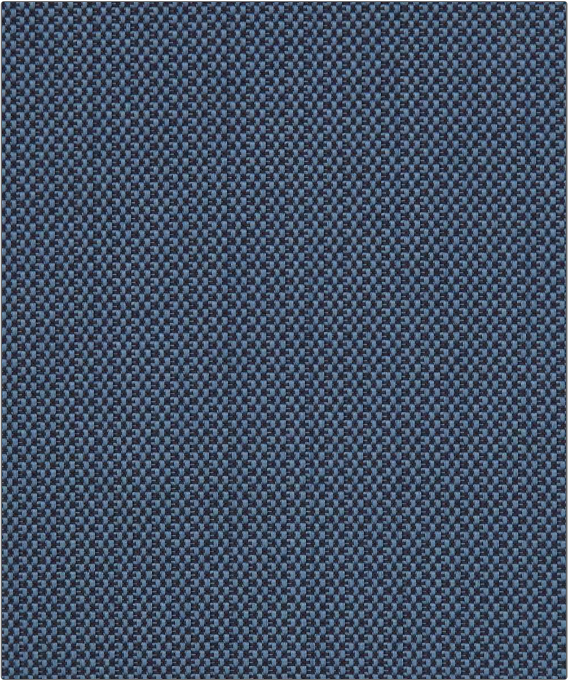


| | |
|---------|---------|
| PATTERN | Tempera |
| COLOR | Borage |

| | |
|---|---|
| BRAND | APPLICATION |
| Liberty of London | Fabric |
| USES | CATEGORIES |
| Bedding, Drapery, Multipurpose, Upholstery | Outdoor, Solids / Small Scale Patterns |
| BOOK | COLORS |
| LOL The Liberty Garden Indoor / Outdoor | Blue |
| DESIGN TYPES | RAILROADED |
| Solid | Not Railroaded |



| | | | |
|----------------------|-------------------------|-------------------------------|--------------------|
| WIDTH | VERTICAL REPEAT | HORIZONTAL REPEAT | CONTENT |
| 55.00 in (139.70 cm) | 0.00 in (0.00 cm) | 0.00 in (0.00 cm) | 100% Polypropylene |
| BACKING | FIRE CODES | DOUBLE RUBS | PRODUCT NUMBER |
| | UFAC Class I / NFPA 260 | Exceeds 50,000 Double Rubs | 8160501 |
| DATE BOOKED | COUNTRY | CLEANING CODES | |
| 05/2021 | Italy | S, WASHABLE | |

| |
|---|
| ADDITIONAL PRODUCT NOTES |
| Passes 50,000 Martindale Tst, Indoor / Outdoor, Ca Tb 117-2013, Exclusive Pattern, Washable |