

**PATTERN** Ackerman  
**COLOR** Capri Blue

**BRAND**

**Fabricut**

**APPLICATION**

**Fabric**

**USES**

**Upholstery**

**CATEGORIES**

**Outdoor, Easy To Clean**

**BOOK**

**Alfresco Living**

**COLORS**

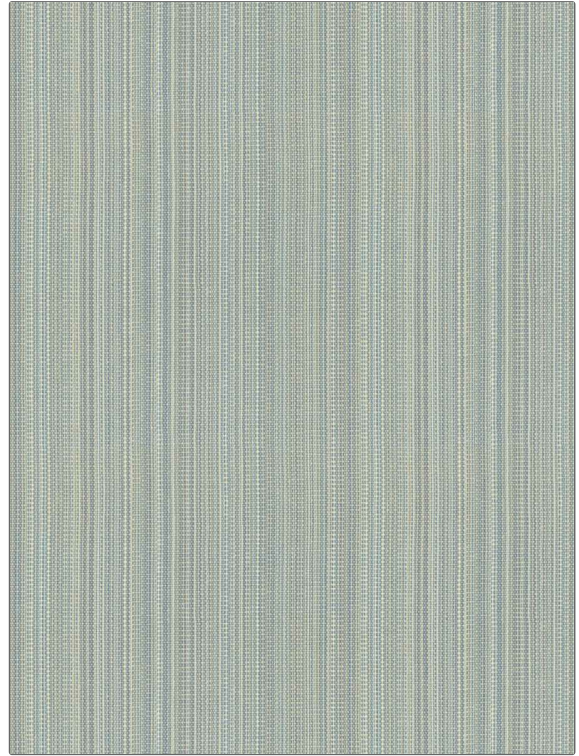
**Aqua / Teal**

**DESIGN TYPES**

**Stripes, Texture Plain**

**RAILROADED**

**Railroaded**



**WIDTH**

**54.00 in (137.16 cm)**

**FINISH**

**Water Repellent Finish**

**VERTICAL REPEAT**

**0.00 in (0.00 cm)**

**HORIZONTAL REPEAT**

**0.00 in (0.00 cm)**

**CONTENT**

**50% Polypropylene, 50% Polyester**

**BACKING**

**FIRE CODES**

**UFAC Class I / NFPA 260**

**DOUBLE RUBS**

**Exceeds 45,000 Double Rubs (Wyzenbeek Method)**

**PRODUCT NUMBER**

**8165602**

**DATE BOOKED**

**11/2022**

**COUNTRY**

**Mexico**

**CLEANING CODES**

**WS**

**ADDITIONAL PRODUCT NOTES**

**Water Repellent Finish, Pfas-Free, Easy To Clean Finish, Indoor / Outdoor, 2,000 Hours Light Fastness, Ca Tb 117-2013, Shown Railroaded**