

**PATTERN** Burke  
**COLOR** Cherry

**BRAND**

Fabricut

**APPLICATION**

Fabric

**USES**

Bedding, Drapery,  
Multipurpose, Upholstery

**CATEGORIES**

Easy To Clean, Fibreguard,  
Solids / Small Scale  
Patterns, Chenille, Eco /  
Environment Plus

**BOOK**

Burke

**COLORS**

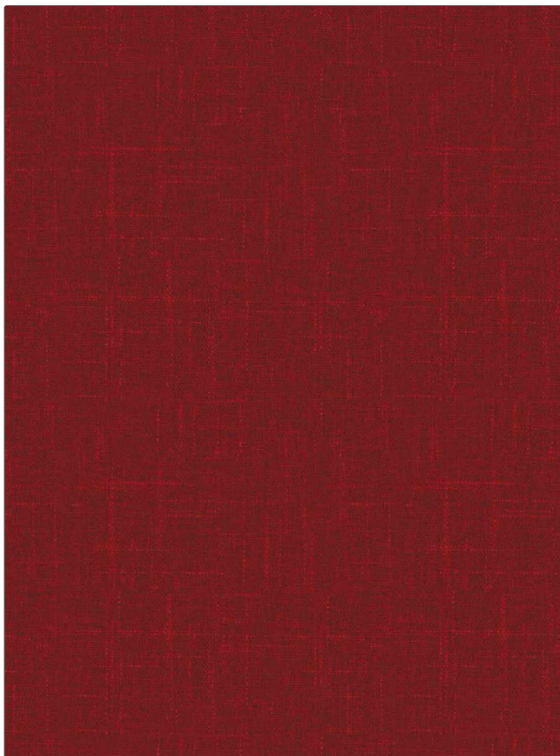
Red

**DESIGN TYPES**

Solid

**RAILROADED**

Not Railroaded



**WIDTH**

54.00 in (137.16 cm)

**FINISH**

Fibreguard

**VERTICAL REPEAT**

0.00 in (0.00 cm)

**HORIZONTAL REPEAT**

0.00 in (0.00 cm)

**CONTENT**

69% Recycled Polyester,  
21% Polyester, 10%  
Viscose

**BACKING**

**FIRE CODES**

UFAC Class I / NFPA 260,  
Passes MVS 302

**DOUBLE RUBS**

Exceeds 100,000 Double  
Rubs (Wyzenbeek Method)

**PRODUCT NUMBER**

8345823

**DATE BOOKED**

04/2023

**COUNTRY**

India

**CLEANING CODES**

WW

**ADDITIONAL PRODUCT NOTES**

Fibreguard, Pfas-Free, Easy To Clean Finish, Passes 40,000 Martindale Tst, Oeko Tex Standard 100, Mildew Resistant, Iso 14001, Ca Tb 117-2013, Anti-Bacterial / Anti-Microbial, Exclusive Pattern, Eco / Environment Plus