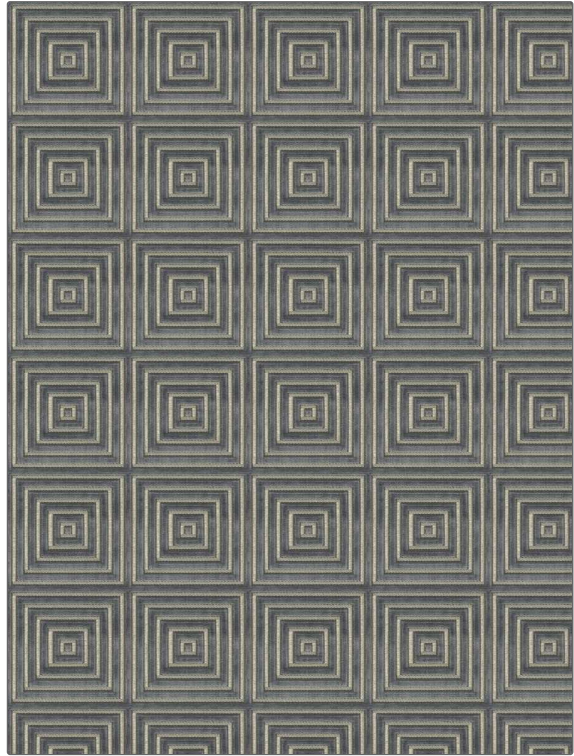


**PATTERN** Holbox  
**COLOR** 02

<b>BRAND</b>	<b>APPLICATION</b>
Fabricut	Fabric
<b>USES</b>	<b>CATEGORIES</b>
Upholstery	Velvet / Grospoint, Wovens
<b>COLORS</b>	<b>DESIGN TYPES</b>
Grey, Blue	Geometric, Contemporary / Modern
<b>SCALE</b>	<b>RAILOADED</b>
Medium	Not Railed



<b>WIDTH</b>	<b>VERTICAL REPEAT</b>	<b>HORIZONTAL REPEAT</b>	<b>CONTENT</b>
51.00 in (129.54 cm)	5.62 in (14.27 cm)	5.75 in (14.60 cm)	71% Polyester, 29% Viscose
<b>BACKING</b>	<b>FIRE CODES</b>	<b>DOUBLE RUBS</b>	<b>PRODUCT NUMBER</b>
	UFAC Class I / NFPA 260	Exceeds 36,000 Double Rubs (Wyzenbeek Method)	8375802
<b>COUNTRY</b>	<b>CLEANING CODES</b>		
India	S		

**ADDITIONAL PRODUCT NOTES**

Ca Tb 117-2013, Exclusive Pattern