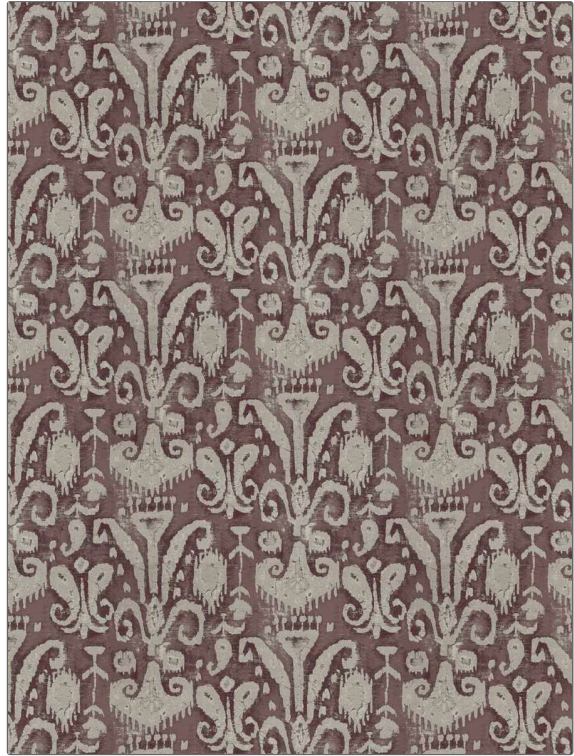


**PATTERN** Soneva  
**COLOR** 04

<b>BRAND</b>	<b>APPLICATION</b>
Fabricut	Fabric
<b>USES</b>	<b>CATEGORIES</b>
Bedding, Drapery, Multipurpose, Upholstery	Wovens
<b>COLORS</b>	<b>DESIGN TYPES</b>
Lavender / Purple, Burgundy	Global / Ethnic
<b>SCALE</b>	<b>RAILROADED</b>
Large	Not Railroaded



<b>WIDTH</b>	<b>VERTICAL REPEAT</b>	<b>HORIZONTAL REPEAT</b>	<b>CONTENT</b>
56.00 in (142.24 cm)	22.75 in (57.78 cm)	28.00 in (71.12 cm)	48% Cotton, 24% Viscose, 20% Linen, 8% Polyester
<b>BACKING</b>	<b>FIRE CODES</b>	<b>DOUBLE RUBS</b>	<b>PRODUCT NUMBER</b>
	UFAC Class I / NFPA 260	Exceeds 30,000 Double Rubs (Wyzenbeek Method)	8405904
<b>COUNTRY</b>	<b>CLEANING CODES</b>		
India	S		

**ADDITIONAL PRODUCT NOTES**

Ca Tb 117-2013, Exclusive Pattern