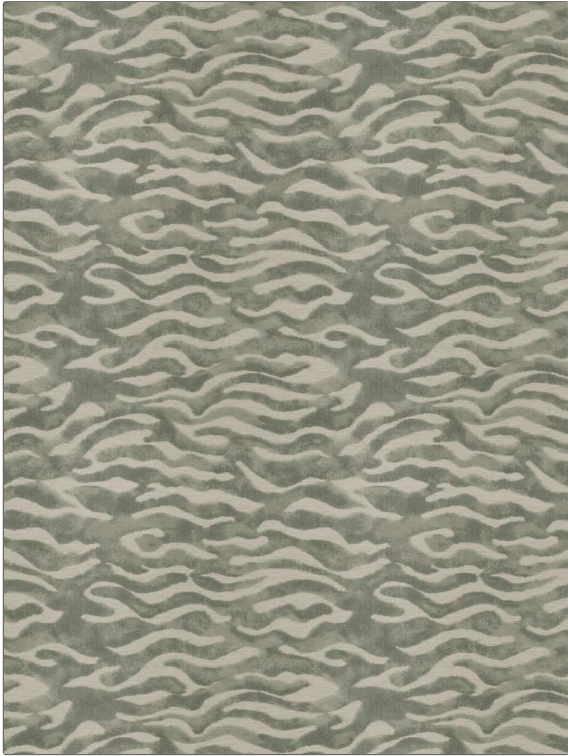


PATTERN	Bawah
COLOR	Thyme

BRAND	APPLICATION
Fabricut	Fabric
USES	CATEGORIES
Upholstery	Velvet / Grospoint, Wovens, Chenille
BOOK	COLORS
Luxe Home Ocean / Ink	Light Green
DESIGN TYPES	SCALE
Animal Skins	Medium
RAILOADED	
Not Railroaded	



WIDTH	VERTICAL REPEAT	HORIZONTAL REPEAT	CONTENT
55.00 in (139.70 cm)	15.25 in (38.74 cm)	13.87 in (35.23 cm)	59% Polyester, 41% Viscose
BACKING	FIRE CODES	DOUBLE RUBS	PRODUCT NUMBER
100% Latex Backing	UFAC Class I / NFPA 260	Exceeds 30,000 Double Rubs (Wyzenbeek Method)	8406202
DATE BOOKED	COUNTRY	CLEANING CODES	
04/2023	India	S	

ADDITIONAL PRODUCT NOTES
Ca Tb 117-2013, 100% Latex Backing, Exclusive Pattern